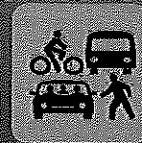
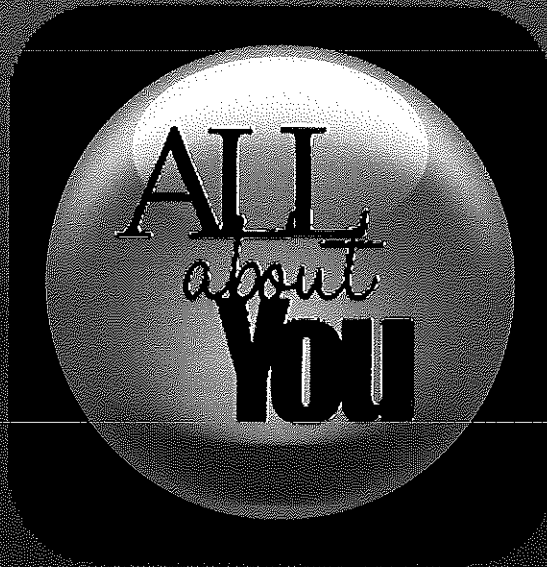
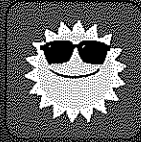


MYTIME

Moving **Y**outh
Toward **I**ndependence &
Meaningful **E**manicipation



What's Inside?

Agency Contacts	4
Circle of Support	6
Housing	8 9
Education	10 11
Money for School Steps to College	12 13
Employment	14 15
Transportation	16
Important Documents	17
Health & Well Being	18 19
Circle of Support and Permanency	20
Other Cool Stuff to Know	21
Resources (South County)	22
Resources (General)	23