

# Envisioning a Partnership for Effective Diversion

**Marvin J. Southard, DSW, Director**  
**Los Angeles County Department of Mental Health**



# An Ode to Gladwell

- Outliers
- Million Dollar Murray
- David & Goliath

# Power Law

- Over-policing
- Use of force
- Three strikes

# Incarceration & African-Americans

- 4,367 out of every 100,000 adult African-American men in California were incarcerated in 2013 – almost nine times the rate of non-Latino Whites (Public Policy Institute of California, <http://www.ppic.org>)
- According to the OJJDP census, in 2011, African-American youth 21 or younger constituted roughly 24% of California juveniles in residential placements. (Office of Juvenile Justice and Delinquency Prevention, <http://www.ojjdp.gov>)
- 33% of youth in juvenile camps in Los Angeles County in 2007 were African-American. (report to SD2, <http://file.lacounty.gov/bos/supdocs/58190.pdf>)

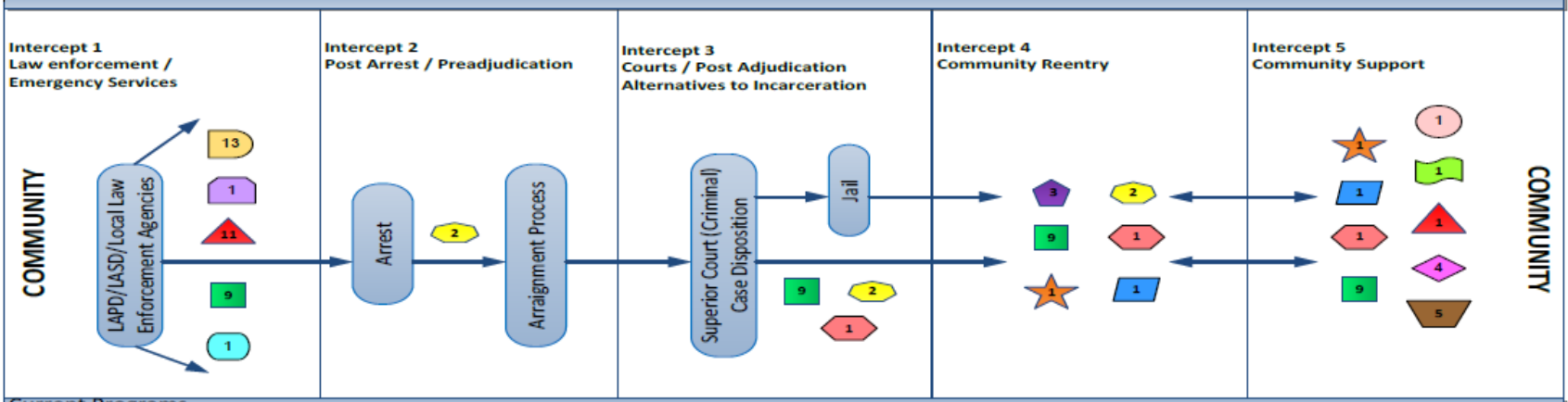
# Incarceration & Latinos

- 922 out of every 100,000 adult Latino men in California were incarcerated in 2013 – almost double the rate of non-Latino Whites (Public Policy Institute of California, <http://www.ppic.org>)
- According to the OJJDP census, in 2011, Hispanic youth 21 or younger constituted roughly 60% of California juveniles in residential placements. (Office of Juvenile Justice and Delinquency Prevention, <http://www.ojjdp.gov>)
- 62% of youth in juvenile camps in Los Angeles County in 2007 were Hispanic. (report to SD2, <http://file.lacounty.gov/bos/supdocs/58190.pdf>)

# Diversion

- What is it?
- Who are traditionally involved?
- What are some of the current models?

# 5 Key Diversion Intercepts



| Intercept 1<br>Law enforcement /<br>Emergency Services   | Intercept 2<br>Post Arrest / Preadjudication   | Intercept 3<br>Courts / Post Adjudication<br>Alternatives to Incarceration  | Intercept 4<br>Community Reentry  | Intercept 5<br>Community Support  |
|--|--|---|---|---|
| <p><b>Emergency Outreach Bureau (EOB)</b><br/>SB82 Law Enforcement Mental Health Teams (11)*<br/>See Page 2</p> <p><b>Countywide Resources Management (CRM)</b><br/>Law Enforcement Beds<br/>1. Aurora Charter Oak<br/>2. College Hospital</p> <p><b>Pre-Booking Diversion Program*</b><br/>A law enforcement collaborative program to divert individuals with mental illness that could be charged with minor offenses from incarceration to community mental health treatment.</p> <p><b>Laura's Law*</b><br/>A proposal to fully implement Assisted Outpatient Treatment which provides a process to allow court-ordered outpatient treatment.</p> <p><b>SB82 Law Enforcement Mental Health Teams (13)*</b><br/>To be implemented in Service Areas 1, 4, 6, 7, and 8.</p> | <p><b>Mental Health Court Linkage Program (MHCLP)</b><br/>1. Court Liaison Program: Provides MH services, linkage, consultation, education, navigation, and discharge planning at all of the Superior Courts.<br/>2. Misdemeanor Incompetent to Stand Trial (MIST): MH staff co-located at MH court to evaluate clients incompetent to stand trial on misdemeanors. Provide competency training for all out of custody MIST clients.</p> | <p><b>Mental Health Court Linkage Program (MHCLP)</b><br/>1. Co-occurring Disorders Court (CODC): MH staff evaluates clients for community treatment in lieu of incarceration for 62 individuals at any given time.<br/>2. AB 109 Revocation Court: MH clinicians are co-located at the Revocation Court to triage mentally ill/co-occurring individuals to appropriate levels of care.</p> <p><b>Countywide Resources Management (CRM)</b><br/>See page 2</p> <p><b>Public Guardian (PG)</b></p> | <p><b>Mental Health Court Linkage Program (MHCLP)</b><br/>1. Community Reintegration Program: Provides alternatives to incarceration at two programs, one locked/one residential, serving 67 clients.<br/>2. Court Liaison Program: Provides linkage for mentally ill or co-occurring individuals countywide to directly operated and contracted MH agencies.</p> <p><b>Jail Mental Health Services (JMHS)</b><br/>1. Jail Linkage Program<br/>2. Just In Reach<br/>3. Women's Community Reintegration Services Program (WCRS) Jail in Reach</p> <p><b>Countywide Resource Management (CRM)</b><br/>1. AB109 Jail in Reach<br/>2. SB82 Forensic Outreach Teams*<br/>3. See Page 2</p> <p><b>Adult System of Care (ASOC) Service Area Navigators</b></p> <p><b>County Hospital (CH)</b><br/>Inmates in need of acute inpatient services post release and/or conservatorship and placement</p> <p><b>Public Guardian (PG)</b></p> | <p><b>Adult System of Care (ASOC)</b><br/>1. Vets VALOR Program<br/>2. Full Service Partnership (FSPs)<br/>3. Field Clinical Capable Services (FCCS)<br/>4. Outpatient Services<br/>5. Faith-based Organizations<br/>6. Peer Support Services</p> <p><b>Emergency Outreach Bureau (EOB)</b><br/>Training to Law Enforcement Agencies</p> <p><b>Housing and Homeless Mental Health Programs</b></p> <p><b>County Hospital (CH)</b><br/>Inmates in need of acute inpatient services post release and/or conservatorship and placement</p> <p><b>Countywide Resources Management (CRM)</b> - See page 2</p> <p><b>Older Adult System of Care (OASOC)</b><br/>1. Full Services Partnerships (FSP)<br/>2. Field Capable Clinical Services (FCCS)<br/>3. DMH Hoarding Taskforce<br/>4. Community Education/Presentation<br/>5. Consultation/Cross-Training</p> <p><b>Public Guardian (PG)</b><br/>Urgent Care Center (UCC)<br/>1. Long Beach<br/>2. Olive View<br/>3. Exodus Westside<br/>4. Exodus Eastside</p> <p><b>Health Neighborhoods (HN)*</b></p> |

\* Proposed



# Diversion – Intercept 1 Existing Law Enforcement Emergency Programs

## Emergency Outreach Bureau (EOB) – Law Enforcement Team

- Collaborative law enforcement-mental health program that pairs police officers and mental health personnel to respond to police calls involving individuals with mental illness. (Sheriff/MET, LAPD/SMART, MTA, Burbank PD/BMHET, Alhambra PD/AMET, Santa Monica /PDHLP, Long Beach PD/LBMET, Pasadena PD/HOPE)

## Countywide Resource Management (CRM) - Law Enforcement Hospital Beds

- Acute inpatient services for individuals who are brought to the attention of law enforcement agencies and are assessed as being in need of acute hospital treatment in lieu of incarceration





# Diversion – Intercept 1

## New Law Enforcement Emergency Programs

### EOB - Law Enforcement Team

- Expansion of existing MET-SMART teams and addition of new law enforcement jurisdictions; pairing mental health clinicians with law enforcement officers.

### CRM - Urgent Care Centers (UCC) and Crisis Transition Specialists (CTS)

- Three new mental health UCCs will be added. The UCCs will serve as primary diversion locations for individuals identified by police as requiring diversion to community mental health care in lieu of booking. CTS will be affiliated with each UCC to follow at risk and underserved individuals discharged from the UCCs to ensure linkage with on-going care.

### CRM - Crisis Residential Treatment Programs

- Individuals diverted through urgent care centers that require brief treatment (14 days) in an open community-based residential setting may be sent to crisis residential programs. Up to 35 new programs will add to the 3 currently existing but will be phased in gradually.

### Laura's Law

- Full implementation of Laura's Law addresses the needs of mentally ill adults by providing a process to allow court-ordered outpatient treatment. DMH staff will conduct outreach and engagement, assessment, manage court processes, and link to FSP and intensive residential service providers.



# Diversion – Intercept 2

## Existing Post Arrest/Pre-adjudication Programs

### Mental Health Court Linkage/ Court Liaison Program (MHCLP)

- Social workers in 22 criminal courts provide assessments, referrals, linkage and diversion to mental health services to defendants with mental illness

### Mental Health Court Program Misdemeanor Incompetent to Stand Trial Program

- Mental health worker evaluates defendants deemed incompetent to stand trial in order to link with appropriate treatment level to restore competency and provides competency training to out of custody MIST clients

# Diversion – Intercept 3

## Existing Courts/Post-adjudication Incarceration Alternatives

### MHCLP – Co-occurring Disorders Court

- Collaborative court model targeting clients with mental health and substance abuse problems offering treatment in lieu of incarceration

### MHCLP – AB109 Revocation Court

- MH Clinicians at revocation court triage and partner with jail linkage to link clients to appropriate levels of care

# Diversion – Intercept 3 New Courts/Post-adjudication Incarceration Alternatives

MHCLP – Project 60 San Fernando Community Mental Health Center

- Project 60 expansion to provide housing and integrated services for an additional 50 homeless persons with co-occurring mental health and substance abuse disorders referred from the San Fernando and Van Nuys courts. This pre-sentencing diversion program, partially funded by the Third Supervisorial District, will serve persons charged with misdemeanors or low-grade felonies

# Diversion – Intercept 4 Existing Community Reentry Programs

## MHCLP – Community Reintegration Program

- Alternative sentencing program for defendants with mental illness providing specialized residential treatment programs

## Jail Mental Health - Jail Linkage Program

- Staff housed in the Los Angeles County Jail ensure linkage of individuals being released to community treatment programs

## Jail Mental Health – Women’s Reintegration Program

- Designed for women with co-occurring mental health and substance abuse problems, providing jail in-reach and community services

# Diversion – Intercept 4

## New Community Reentry Programs

### CRM - Forensic Outreach Teams

- Provides jail in-reach, short-term intensive case, care coordination and triage services for individuals with histories of mental illness and criminal justice involvement being released from jails.

### CRM – In-custody IMD Step-down Program

- DMH and LASD are collaborating on the implementation of a pilot In-custody IMD Step-Down Program to provide augmented residential mental health services for male AB 109 inmates that have intensive mental health needs and are within 60 to 90 days of release from jail. Program participants would remain in-custody (under the jurisdiction of the LASD), but serve the remaining 60 to 90 days of their sentences in the IMD Step-Down program.

# Diversion – Intercept 5

## Existing Community Supports

### Full Service Partnership (FSP) Programs

- Serving adults and older adults with dedicated slots for individuals exiting the jail and juvenile probation system to prevent recidivism

### MH Urgent Care Centers

- Provides intensive (under 24 hours) crisis services for those who otherwise would be brought to emergency rooms.

# Diversion – Intercept 5

## Expanding Community Supports

### Full Service Partnership

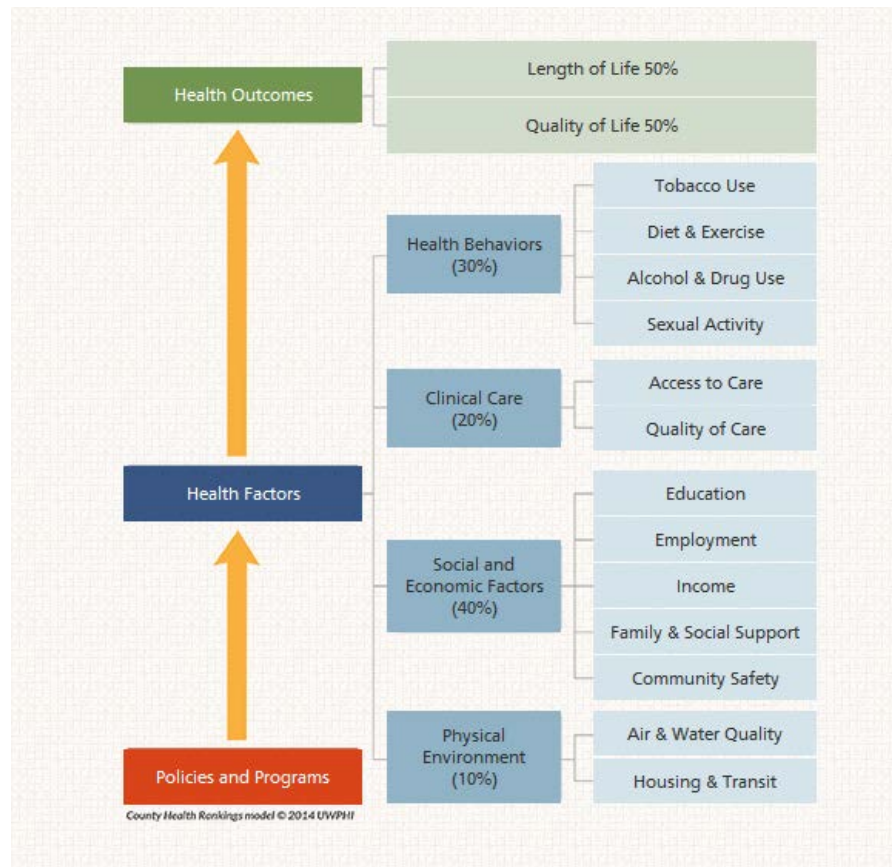
- FSPs serving TAY, Adults and Older Adults will add slots during FY 14-15. Anticipated number of slots to be dedicated to individuals entering/exiting the criminal justice system.



# Health Neighborhood

- What is it?
- How could it work?
- Why is it relevant now?
- Role of New Substance Abuse Treatment Benefit

# What Counts



# Role of the Neighborhood

- What can community do?
- What can government agencies do?
- What can CBOs do?
- What can FBOs do?