

Getting to Know FARS

CBHDA Financial Analysis and Review Subcommittee (FARS)

- Kara Anguiano, Stanislaus County Behavioral Health & Recovery Services
- Melissa Chilton, Humboldt County DHHS – Financial Services
- Allison McClaughry, Nevada County Behavioral Health



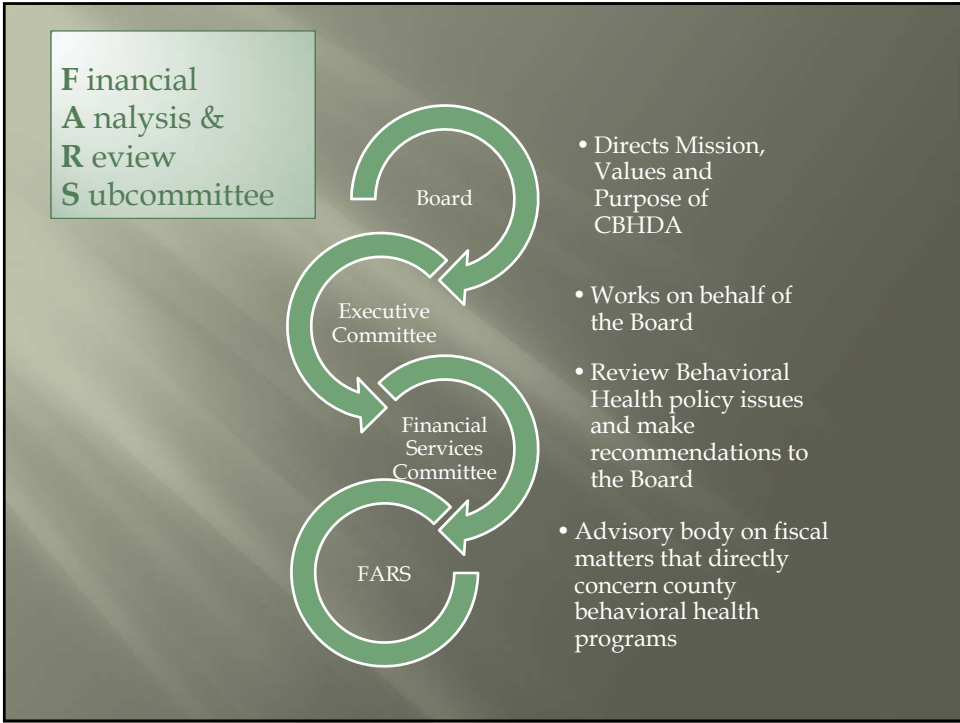
Mission:

Assure the accessibility of quality, cost-effective, culturally competent behavioral health care for Californians by providing leadership, advocacy, and support to public behavioral health programs.

Purpose:

- To advocate for the public behavioral health system and its delivery of care to persons experiencing behavioral health issues in California.
- To promote the reduction of individual and community problems related to unaddressed behavioral health issues.
- To convene behavioral health professionals for the purpose of informing public policy and improving the delivery of behavioral health services.





**F inancial
A nalysis &
R eview
S ubcommittee**

Activities

- Review state notices and give feedback before they are released statewide
- Work with state agencies, including DHCS, on funding and distribution methodologies
- Meet with state agencies to discuss issues and help shape solutions prior to implementation statewide, and offer information or data as necessary on county fiscal operations
- Participate in state subcommittee work groups as needed

Off & Running

Current Projects & Priorities:

- Mental Health Services Act (MHSA) Revenue and Expenditure Report review
- MHSA Fiscal Regulation input
- MHSOAC Fiscal Transparency Tool
- Forecasting Cost Projections for the implementation of CCR
- CMS Final Rule

Enclosure 3

Annual Mental Health Services Act Revenue and Expenditure Report for Fiscal Year 2013-14
Community Services and Supports (CSS) Summary
County: San Francisco Date: 10/28/2014

Community Services and Supports Expenditure		Total (Direct) Mental Health
FYF Programs		\$9,379,712
1 CSS Full Service Partnership - JCF (JCF)	\$955,617	
2 CSS Full Service Partnership - JCF (JCF)	\$1,134,750	
3 CSS Full Service Partnership - Adult (JCF)	\$8,749,671	
4 CSS Full Service Partnership - Child (JCF)	\$919,124	
5 CSS FYF Program - Housing (Adult and Child)	\$955,617	
6 FYF grants served by Financial Services (FYF)	\$9,379,712	
7 FYF grants served by Emergency Stabilization Housing (ES)	\$9,379,712	
8 FYF grants served by Housing Placement and Support (HP)	\$9,379,712	
9 FYF grants served by JCF/TJ/TJ Transitional Housing (JCF/TJ)	\$9,379,712	
10		
11		
12		
13		
14		
15		
16		
17		
18		
19		
20		
21		
22		
23		
24		
25		
26		
27		
28		
29		
30		
31		
32		
33		
34		
35		
36		
37		
38		
39		
40		
41		
42		
43		
44		
45		
46		
47		
48		
49		
50		
51		
52		
53		
54		
55		
56		
57		
58		
59		
60		
61		
62		
63		
64		
65		
66		
67		
68		
69		
70		
71		
72		
73		
74		
75		
76		
77		
78		
79		
80		
81		
82		
83		
84		
85		
86		
87		
88		
89		
90		
91		
92		
93		
94		
95		
96		
97		
98		
99		
100		

FARS Advisory Value

Mental Health Services Act

➤ Recent success with OAC on revisions to the Fiscal Transparency Data Visualization Tool



Transparency Tool

- Calculation of reversion
- Innovation Info Notice
- Interest reporting

Continuum of Care Reform

➤Implementation
1/1/2017

➤Changing the continuum of services that support children, youth and families to achieve permanency

➤Systemic and infrastructure changes for mental health services: rate structures, training, accreditation, accountability & performance



Mega Rule: Medicaid Managed Care Final Rule

Goals: Improve quality of care/delivery system reform;
Strengthen beneficiary protections;
Improve accountability and transparency;
Align with other health coverage programs

Under the final rule, counties will experience significant expenditure increases

- Admin vs UR claiming
- What will be the claiming mechanism?
- How to capture cost?
- Source of match?
- Network adequacy
- Monitoring requirements
- Quality rating system

FARS Subcommittee Membership

› 3 representatives from different counties located within the 5 geographic regions

› Los Angeles is allowed 1 representative.

› Expanded membership needs with different specialties to meet goals



FARS Membership - Contact Information

Superior region

- › Allison McClaughry allison.mccLaughry@co.nevada.ca.us
- › Melissa Chilton mchilton@co.humboldt.ca.us

Central region

- › Kara Anguiano kanguiano@stanbhhs.org
- › Sharon Mendonca SMendonca@co.merced.ca.us

Bay Area

- › Kimberly Danner Kimberly.Danner@countyofnapa.org
- › Kristin Neal KSNeal@solanocounty.com
- › Leda Frediani leda.frediani@acgov.org

Southern region

- › Jeff Nottke jnottke@ochca.com
- › Joe Zamora jzamora@rcmhd.org
- › Melinda Nickelberry melinda.nickelberry@sdcounty.ca.gov

L.A.

- › Margo Morales MaMorales@dmh.lacounty.gov

Contact Information

Financial Service Committee Chairs

- › Mary Hale
- › Dennis Koch

CBHDA

- › Heather Anders handers@cbhda.org
- › Michele Bennyhoff mbennyhoff@cbhda.org