

2020-2025 WET FIVE-YEAR PLAN IMPLEMENTATION: WET GRANT PROGRAMS

CALIFORNIA INSTITUTE ON BEHAVIORAL HEALTH SOLUTIONS

MENTAL HEALTH SERVICES ACT BOOT CAMP

SEPTEMBER 16, 2020

WET Grant Programs Overview

Anne Powell, Policy Section, HWDD, OSHPD

Presentation Highlights

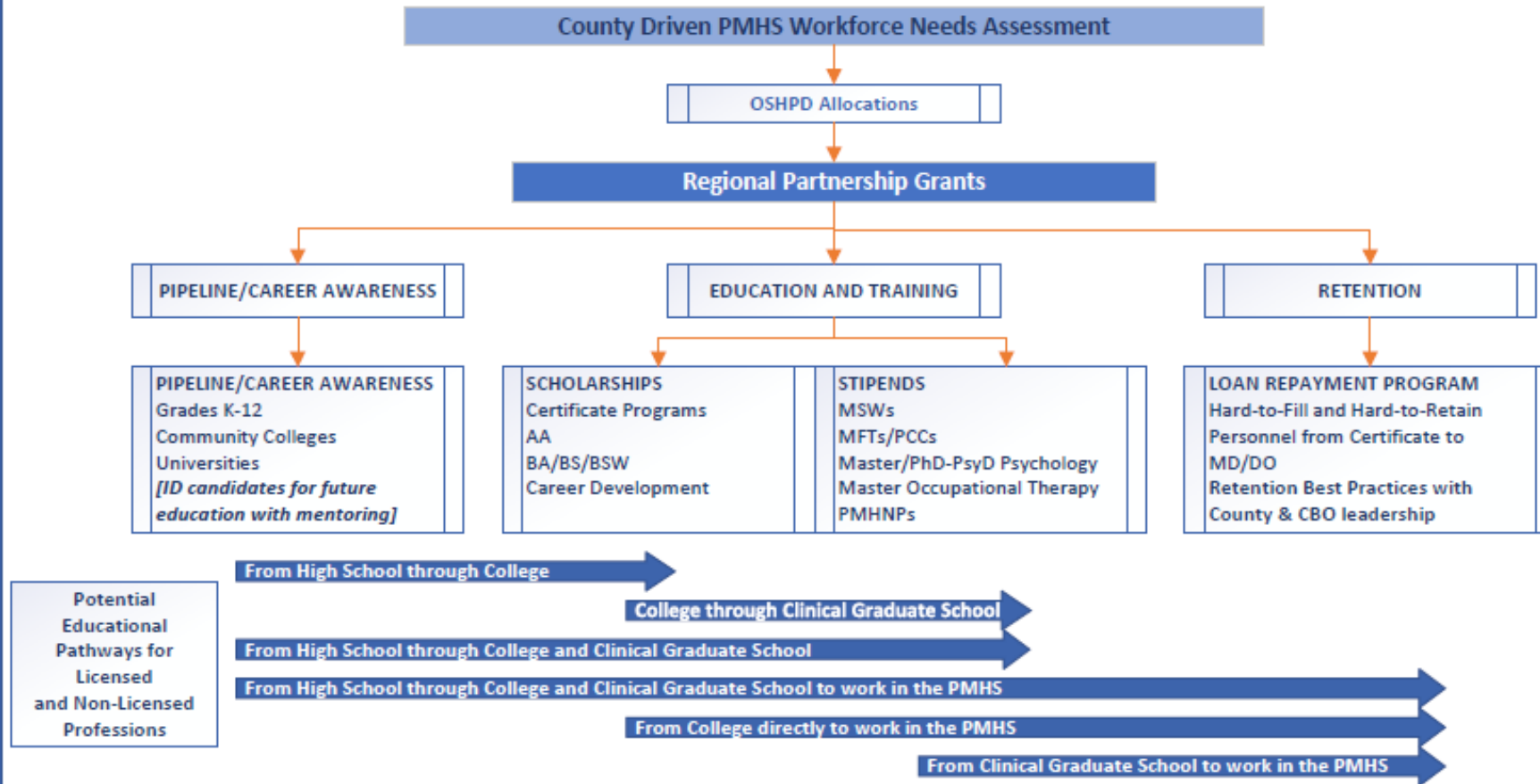
1. Regional Partnership (RP) Grant Program (\$40 million, plus \$13.2 million in local matching funds)
2. Psychiatric Education Capacity Enhancement (PECE) Grant Program (\$17.5 million)

The 2020-2025 WET Five-Year Plan can be view at:

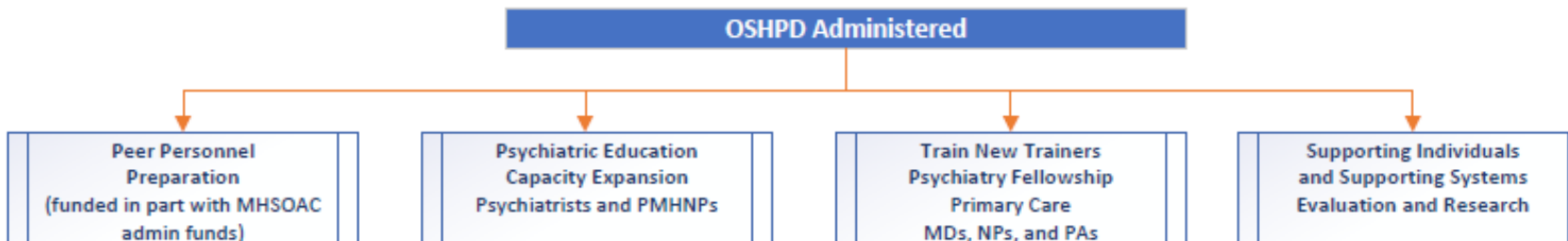
<https://oshpd.ca.gov/ml/v1/resources/document?rs:path=/Loan-Repayments-Scholarships-Grants/Documents/WET/WETFive-YearPlan.pdf>

2020-2025 WET Five-Year Plan: Program Framework

Supporting Individuals



Supporting Systems



Regional Partnership (RP) Program Overview

John Madriz, Manager, Grants Management Section, HWDD, OSHPD

RP Grant Program Funding Allocations

Region	OSHPD Grant Award Amount	RP Local Funds (33% match)	Total Budget
Central	\$6,615,968	\$2,183,269	\$8,799,237
Greater Bay Area	\$7,978,104	\$2,632,774	\$10,610,878
Los Angeles	\$10,057,516	\$3,318,980	\$13,376,496
Southern	\$11,534,457	\$3,806,372	\$15,340,829
Superior	\$3,813,955	\$1,258,605	\$5,072,560
TOTALS	\$40,000,000	\$13,200,000	\$53,200,000



RP Grant Program

RPs allocate funding to support up to five programs:

- Pipeline Development
- Undergraduate College and University Scholarships
- Clinical Master and Doctoral Graduate Education Stipends
- Loan Repayment Program
- Retention

RPs have up to five years to complete program activities.

Regional Partnerships

Central (Alpine, Amador, Calaveras, El Dorado, Fresno, Inyo, Kings, Madera, Mariposa, Merced, Mono, Placer, Sacramento, San Joaquin, Stanislaus, Sutter, Tulare, Tuolumne, Yolo, and Yuba counties)

Greater Bay Area (Alameda, Contra Costa, Marin, Monterey, Napa, San Benito, San Francisco, San Mateo, Santa Clara, Santa Cruz, Solano, and Sonoma counties, and the City of Berkeley)

Los Angeles (Los Angeles County)

Southern (Imperial, Kern, Orange, Riverside, San Bernardino, San Diego, San Luis Obispo, Santa Barbara, and Ventura counties, and the Tri-City (Pomona, Claremont, and La Verne) area of Los Angeles County)

Superior (Butte, Colusa, Del Norte, Glenn, Humboldt, Lake, Lassen, Mendocino, Modoc, Nevada, Plumas, Shasta, Sierra, Siskiyou, Tehama, and Trinity counties)



RP Lead Counties (and Lead Person)

Central Region

Fresno County (Laura Luna)

Greater Bay Area Region

Sonoma County (Melissa Ladrech)

Los Angeles Region

Los Angeles County (Angelita Diaz-Akahori)

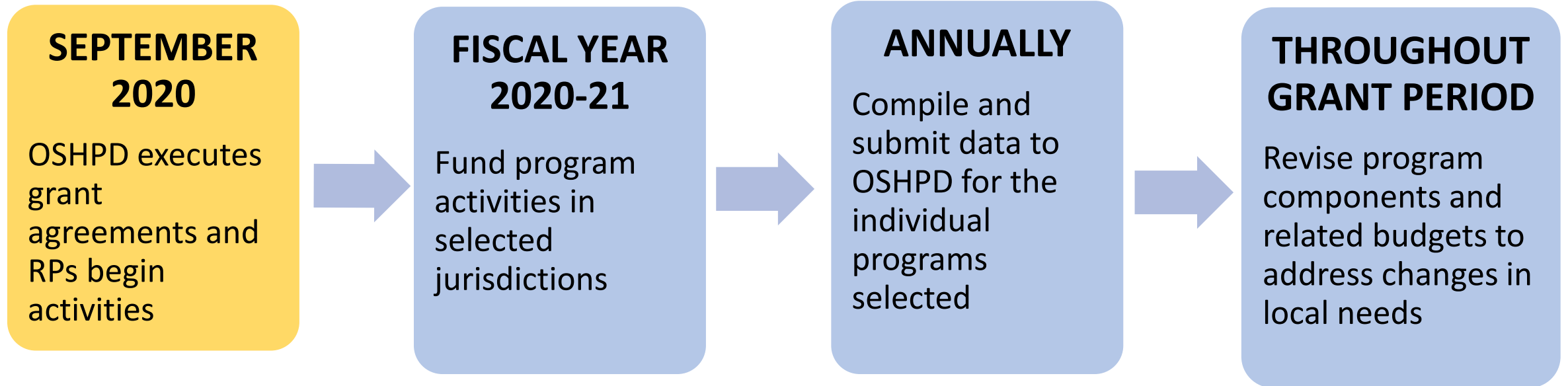
Southern Region

Santa Barbara County (Carla Cross)

Superior Region

Nevada County (Holli Drobny)

RP Roles and Responsibilities: Grant Implementation



RP Grant Program: Activities Report

- OSHPD administers the Activities Report to collect process data (e.g., how many stipends were awarded and to whom).
- RPs complete the Activities Report annually.
- OSHPD shares results of the Activities Report analysis with RPs for potential adjustment of local programs.



PMHS Workforce Survey

- OSHPD is collecting these data to report to policy makers on the workforce needs and the WET program impact.
- The first round of data collection will serve as a baseline.
- OSHPD will collect these data annually.
- OSHPD will share these data with the WET RPs to help inform program design and revisions over the course of the five-year grant period.



RP Grant Program: Central Application

The Central Application will:

- Serve as an application for scholarship, stipend, and loan repayment programs.
- Produce a central repository of data for RPs to determine eligibility, evaluate applicants, and select awardees.



Psychiatric Education Capacity Expansion (PECE) Grant Program Overview

Anne Powell, Policy Section, HWDD, OSHPD

PECE Grant Program

Psychiatry Residents/Fellows

- New Programs: Increase the number of psychiatry residency programs across California
- Expansion Programs: Increase the number of psychiatry residents and child and adolescent fellows trained in the PMHS

Psychiatric Mental Health Nurse Practitioner (PMHNP) Students

- New Programs: Increase the number of PMHNP programs across California
- Expansion Programs: Increase the number of PMHNP students trained in the PMHS



PECE Grant Program Awardees

OSHPD will share information as part of today's presentation.

Detailed information about the awards is available at <https://oshpd.ca.gov/loans-scholarships-grants/grants/wet/>.