
Integration Update

October 1, 2015
Chuck Ingoglia, MSW

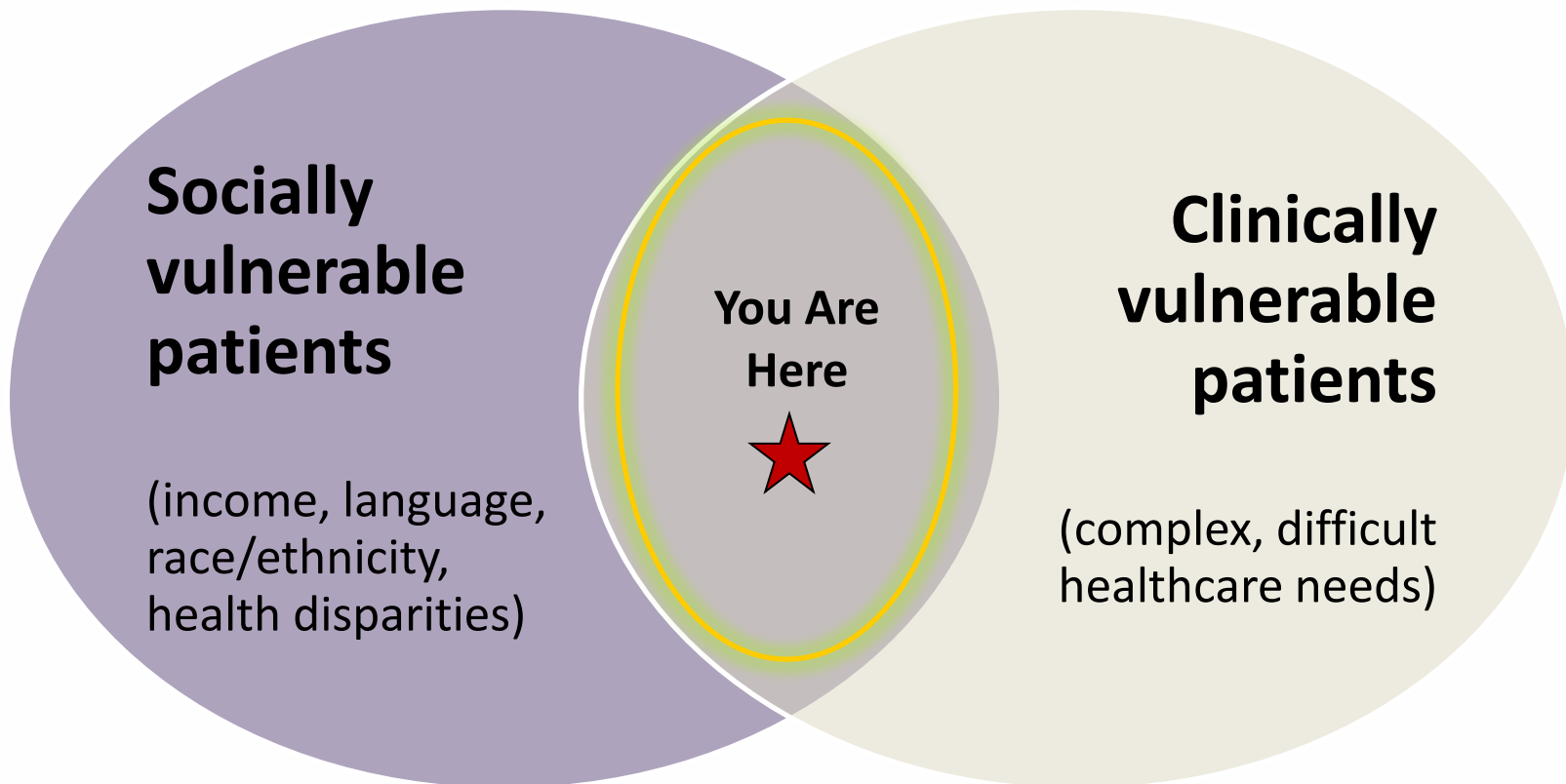


But caring for adults & children with serious behavioral health needs...

- Complex and expensive
- Payers and hospitals struggling to lower costs, improve quality among populations with comorbidities and high behavioral health needs



Our niche: caring for complex, costly patients

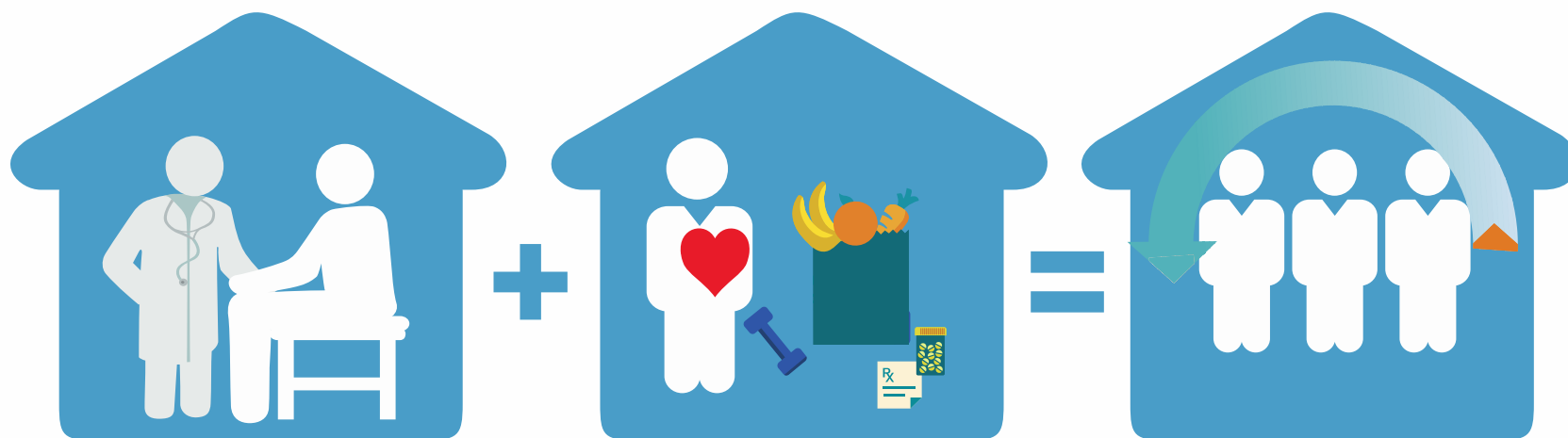


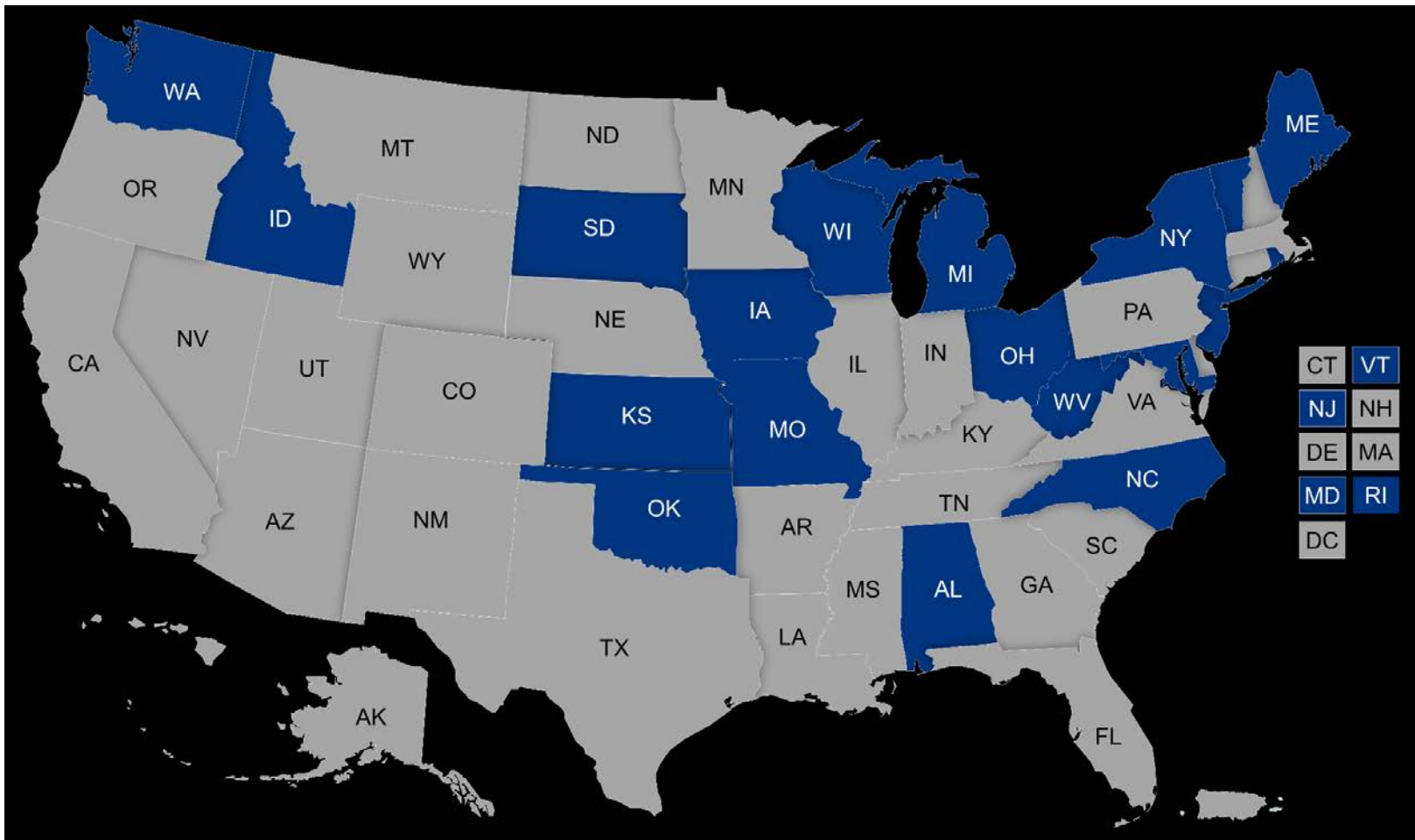
Source: *Health Affairs*: VA Lewis, et al. "The Promise and Peril of Accountable Care for Vulnerable Populations: A Framework for Overcoming Obstacles." 2012.



Two Roles of Behavioral Health Providers in new healthcare delivery system

- Behavioral health inside medical homes—deeply embedded in primary care team, prevention and early intervention, addressing behaviors as well as disorders
- Behavioral health specialty centers of excellence—partnering with medical homes to provide high-value, whole-health care to people with complex conditions





As of August 2015, 19 states have a total of 26 approved Medicaid health home models. States with Approved Health Home SPAs (number of approved health home models) Alabama, Idaho, Iowa (2), Kansas, Maine (2), Maryland, Michigan, Missouri (2), New Jersey (2), New York, North Carolina, Ohio, Oklahoma (2), Rhode Island (3), South Dakota, Vermont, Washington, West Virginia, Wisconsin

Integration's Key Ingredients

- Aligned financial incentives
- Real time information sharing
- Interdisciplinary care teams
- High performing provider networks
- Strong quality management systems





Downloaded from
iStockphoto.com



Questions?

Chuck Ingoglia, MSW

Senior Vice President, Public Policy
and Practice Improvement

chucki@thenationalcouncil.org

202.684.3749

