

Yolo County



SEQUENTIAL INTERCEPT MAPPING IN THE CRIMINAL JUSTICE SYSTEM

SARA GAVIN

CHIEF BEHAVIORAL HEALTH OFFICE, COMMUNICARE HEALTH CENTERS, INC.

IAN EVANS

FORENSIC PROGRAM MANAGER, HEALTH & HUMAN SERVICES AGENCY

APRIL 16, 2019

Presentation Overview



- **Setting the stage**
 - Who are we?
 - What's the Problem?
 - Why Now?
 - Why in Yolo?
- **Sequential Intercept Mapping (SIM) model in Yolo County**
 - What is it?
 - How did we use it?
 - Lessons Learned/Successes
- **Behavioral Health/Criminal Justice Collaboration**
 - Programs
 - Services
 - Improvements
- **Next Steps**

Yolo County



- Population just under 220,000
- 25% are Medi-Cal recipients
- Median income-\$57,663
- Persons below poverty level 17.5%
- Culturally diverse
- Geographically diverse



Health and Human Services Agency (HHSA)



- Integrated to a “super agency” in July 2015



- “Promote a healthy, safe and economically stable community”



CommuniCare Health Centers

- Established 1972, Yolo County, Federally Qualified Health Center
- CCHC serves 1 in every 9 Yolo County Residents
- Legacy of substance use services/ criminal justice population



CommuniCare Health Centers Primary:



- Outpatient Drug Medi-Cal Treatment
- Juvenile Justice Youth in Yolo
- CalWORKs families in Yolo
- Access/triage for County
- Medication Assisted Treatment
- Schools
- Prop 47



Evidence Based Practices

Seeking Safety

Dialectical Behavioral Therapy

Moral Reconciliation Therapy

Illness Management and Recovery

Motivational Interviewing

Cognitive Behavioral Interventions for Substance Abuse

Trauma Focused Cognitive Behavioral Therapy

Rational Emotive Behavior Therapy

Functional Family Therapy

Cognitive Behavioral Therapy

EMDR

What's the Problem?

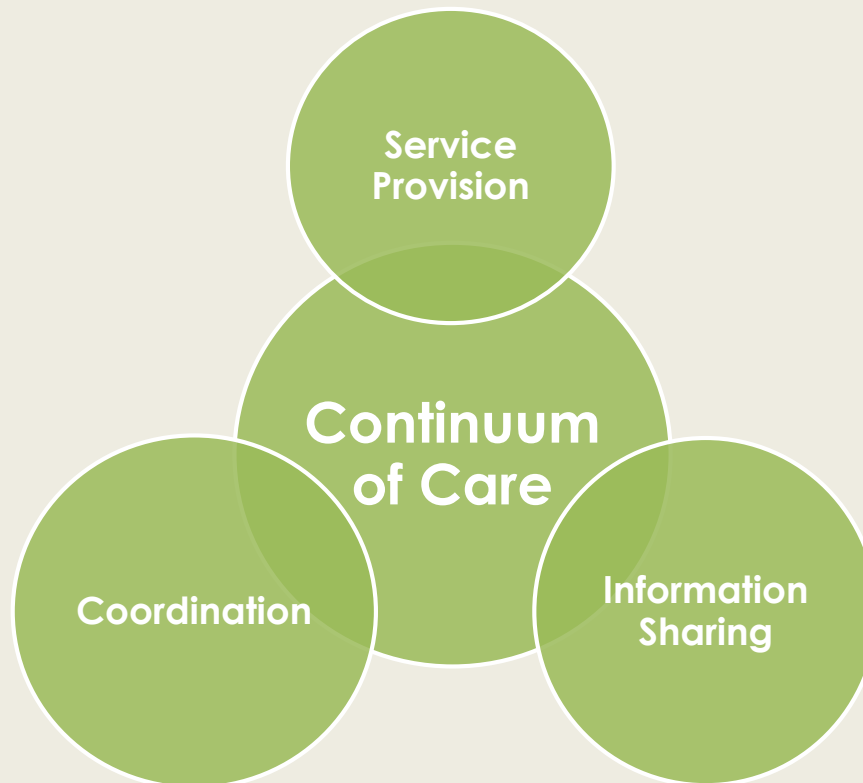


- Approximately 2 million times/year people who have serious mental illness are admitted to jails nationwide
- Approximately 75% of these adults have a co-occurring substance use problem
- Individuals with mental illness often stay longer in jail
- Individuals with mental illness recidivate at higher rates

Why Now? - County Strategic Plan 2016-2019



Strategic Plan Focus Area: “Develop coordinated continuum of care ranging from prevention through intensive services”

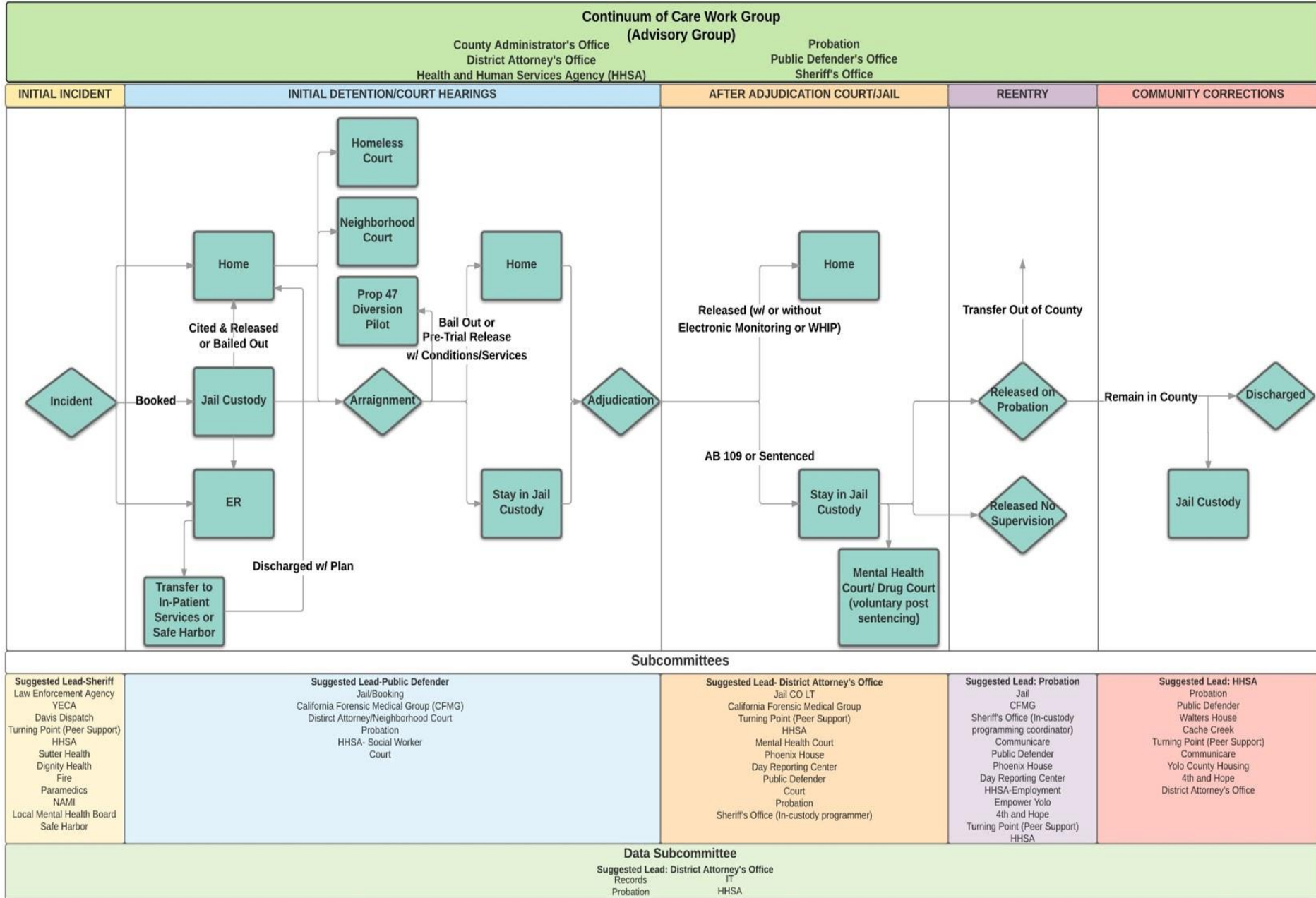


Sequential Intercept Mapping (SIM)

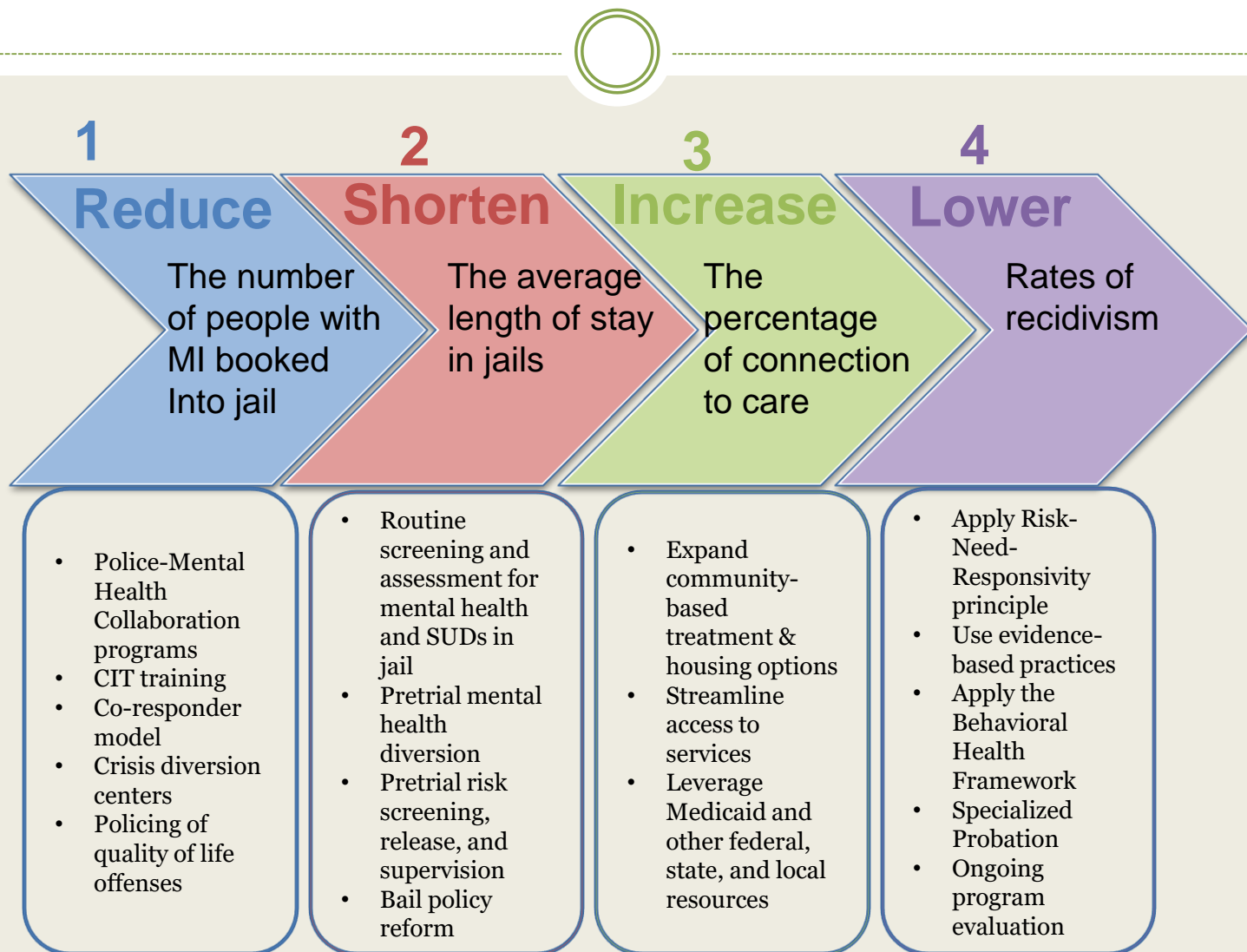


- Early 2000's conceptual model to inform communities – Dr Munetz, Dr Griffin, and Dr Steadman Policy Research Associates
- 2005 formalized linear model through the GAINS Center on behalf of SAMHSA
- 21st Century Cures Act identified SIM as a means for promoting community-based strategies to reduce the justice system involvement of those with mental illness

Yolo County Continuum of Care Criminal Justice Process Map



4 Key Measures



Intercept 1



- **Initial Incident/Contact with Law Enforcement:** Encompasses the initial encounter between an individual and law enforcement pre-arrest that may lead to their entry into the criminal justice system. This represents the beginning of the CJCC.
- **Lead: Davis Police Department**
- **Subcommittee Participants:**
 - **Davis PD Dispatch**
 - **Turning Point**
 - **Health and Human Services Agency (HHSA)**
 - **Sutter**
 - **Dignity Health**
 - **EMS**
 - **YECA**
 - **AMR**
 - **NAMI**
 - **Local Mental Health Board**
 - **Safe Harbor**
 - **4th and Hope**
 - **Yolo County Housing**
 - **Sheriff Department Patrol**

Intercept 2



- **Initial Detention/Initial Court Hearings:** The post-arrest period that spans from the detention and/or arrest of an individual through their initial court hearings (adjudication).
- **Lead: Public Defender's Office**
- **Subcommittee Participants:**
 - Sheriff Dept – Jail/Booking
 - Jail Medical/Mental Health Provider
 - District Attorney
 - Probation
 - HHSA
 - Courts
 - CommuniCare Health Centers

Intercept 3



- **After Adjudication Court/Jail:** Covers an individual's time in the criminal justice system post-adjudication. Particular focus is on an individual's time in jail and involvement in specialty courts such as Mental Health Court or Addiction Intervention Court.
- **Lead: District Attorney's Office**
- **Subcommittee Participants:**
 - Sheriff Department
 - Jail Medical/Mental Health Provider
 - Turning Point
 - Day Reporting Center (DRC)
 - Public Defender's Office
 - Court
 - Probation
 - Sheriff In-Custody Program Coordinator

Intercept 4



- **Reentry Planning and Reentry:** Encompasses the preparation for and eventual re-entry of an individual out of custody and back into the community.
- **Lead: Probation**
- **Subcommittee Participants**
 - **Sheriff Department**
 - **Jail Medical/Mental Health**
 - **Sheriff Department In-Custody Program Coordinator**
 - **Sheriff Department Electronic Monitoring Coordinator**
 - **CommuniCare**
 - **Public Defender's Office**
 - **DRC**
 - **Employment Services**
 - **Empower Yolo**
 - **4th and Hope**
 - **Cache Creek Lodge**
 - **Turning Point**
 - **HHSA**
 - **Yolo Conflict Resolution Center**
 - **Yolo County Office of Education**
 - **Dignity Health**

Intercept 5



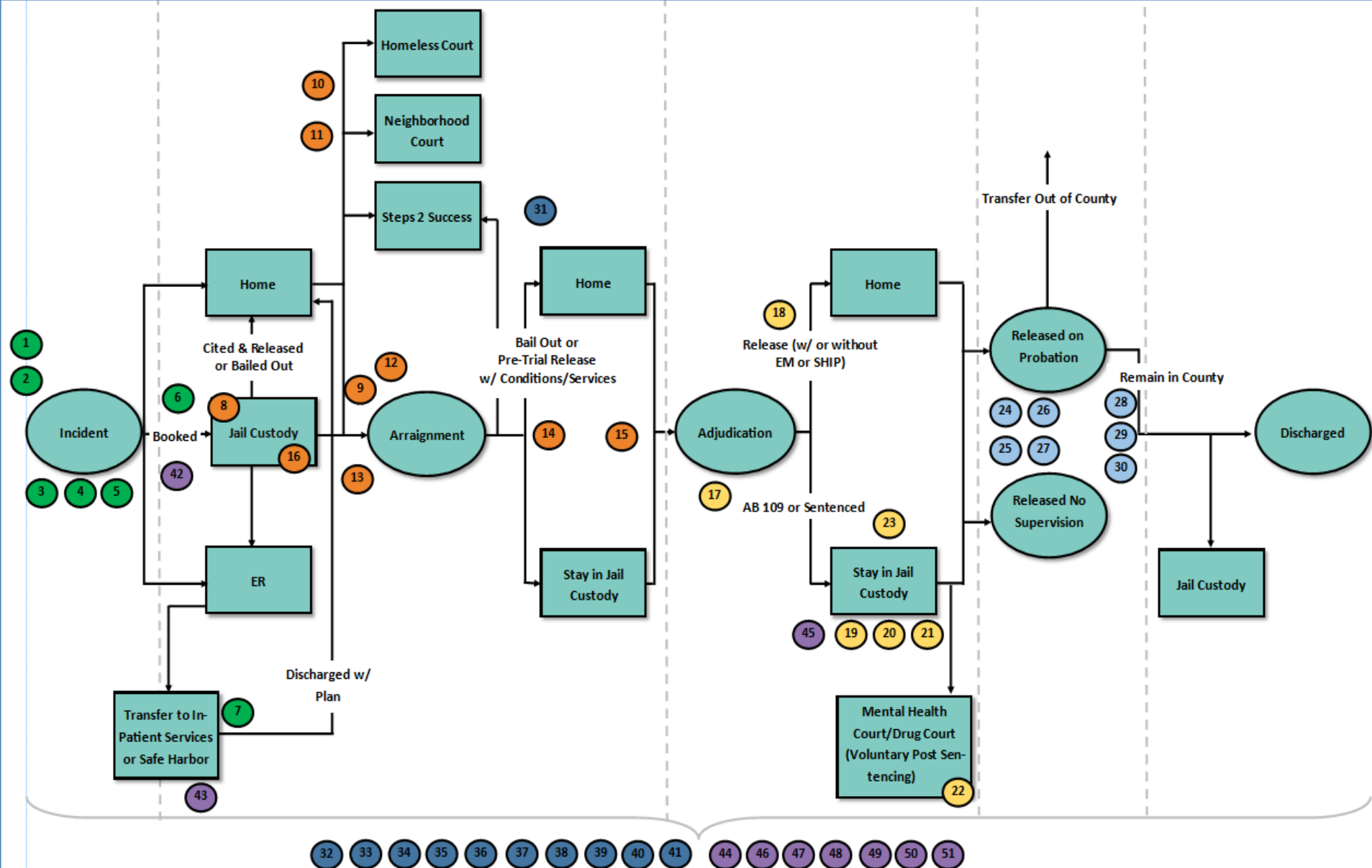
- **Community Corrections:** Covers an individual's continued supervision in the community by the criminal justice system through discharge, as well as, the community support services to assist in successful rehabilitation and to reduce the potential for recidivism. This represents the end of the CJCC.
- **Lead: Sara Gavin, CommuniCare Health Centers Subcommittee Participants**
 - **Probation**
 - **Public Defender's Office**
 - **HHS Homeless Coordinator**
 - **4th and Hope**
 - **Cache Creek Lodge**
 - **Turning Point**
 - **CommuniCare**
 - **District Attorney's Office**
 - **Legal Services of Northern California**

Intercept 6



- **Data Sharing:** This group will examine data sharing across all five intercepts of the continuum to see areas where information is gathered, what is shared, and determine ways to better integrate data sharing among departments and community based organizations.
- **Lead: District Attorney's Office**
- **Subcommittee Participants**
 - **Sheriff Department Planning & Research Manager**
 - **Sheriff Department Records**
 - **District Attorney's Office**
 - **IT Department**
 - **Probation**
 - **HHSA**
 - **County Counsel**
 - **Courts**
 - **Jail Medical/Mental Health**
 - **Public Defender's Office**

Intercept Mapping: Gaps/Needs



Lessons Learned



- Strike while the iron is hot!
- Structure the mapping process differently
- More resources than folks were aware of countywide
- Data sharing is hard!!

CBO Perspective



- CBO in County Culture
- Understanding other systems
- “Needing more services” narrative
- Navigation

Successes



- Criminal Justice Grant Group
- DMC ODS Implementation
- Jail Based Competency Program Development
- Misdemeanor Incompetent to Stand Trial (IST) momentum
- Involuntary Medication – Felony IST clients

Successes



- Mental Health Court – Restorative Justice Addition
- Addiction Intervention Court
- Prop 47 – Steps 2 Success
- Navigation Center – CommuniCare
- Re-Entry Services Grants - CommuniCare

Next Steps



- Juvenile Justice System
- Hospital System
- Syphilis Task Force
- Reentry grant submittal
- Prop 47, Part 2

Questions

