



Innovation Project Submission Process

A Tool Kit for Counties

Sharmil Shah Psy.D, Chief, Program Operations
Grace Reedy, Innovation Team Member



WELLNESS • RECOVERY • RESILIENCE

MHSA INN Regulations require Innovative Projects to either:

- Introduce a new practice or approach to the overall mental health system, including, but not limited to, prevention and early intervention
- Make a change to an existing practice in the field of mental health, including but not limited to, application to a different population
- Apply a promising community driven practice or approach that has been successful in a non-mental health context or setting to the mental health system
- Support participation in a housing program designed to stabilize a person's living situation while also providing supportive services on-site



Primary Purpose of the Innovation Project

- Increase access to underserved groups
- Increase the quality of mental health services
- Promote interagency and community collaboration
- Increase access to mental health services, including, but not limited to, services provided through permanent supportive housing





INNOVATION TOOL KIT

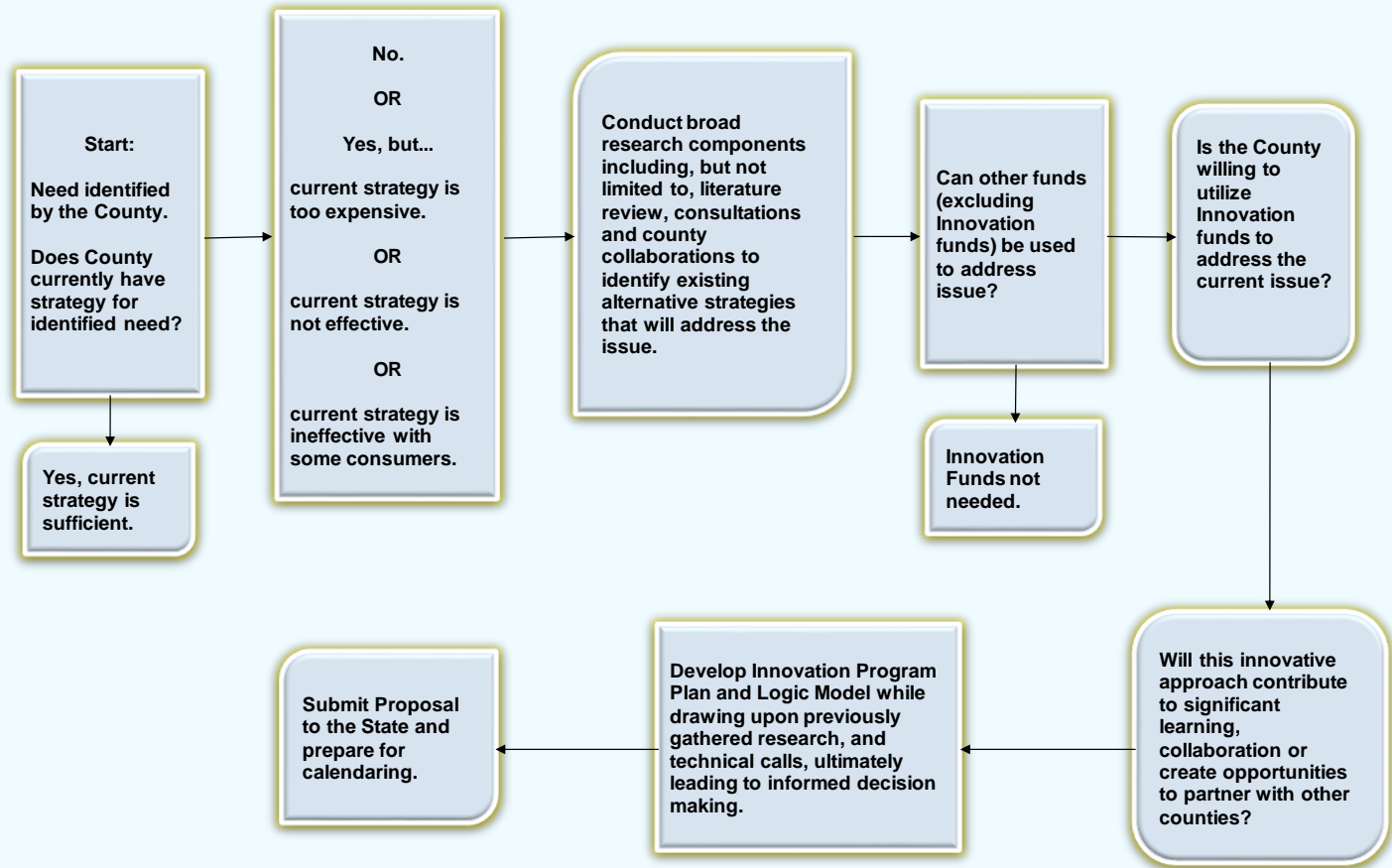


Innovation Toolkit

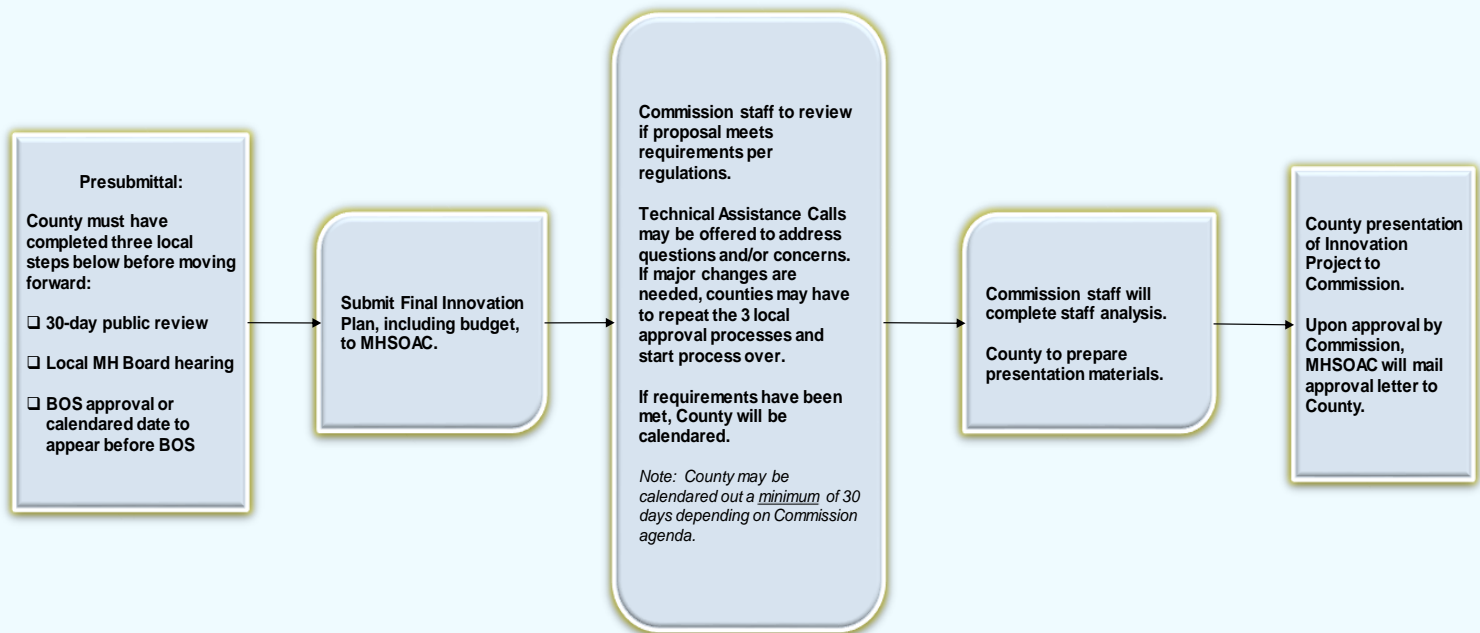
- Innovation Framework Decision Tree
 - Provides information and guidance on how to design an Innovation Project
- MHSOAC Innovation Review Process
 - Visual guide of MHSOAC workflow
- Innovation Project Plan Recommended Template
 - Document will assist counties to ensure minimum requirements are met
- Commission Meeting Recommendations
 - Guides counties on how to present their projects to the Commission



Innovation Framework Decision Tree



Innovation Review Process



Project Plan : Recommended Template

- Application Checklist
 - 30 day public comment period
 - Local Mental Health Board Hearing
 - BOS approval or prospective date to be calendared
 - Desired Presentation Date with Commission

- Section 1 – Regulations
 - General Requirement
 - Primary Purpose



Project Plan : Recommended Template (cont'd)

- Section 2 – Project Overview
 - What is the challenge / need?
 - What is the proposed project?
 - How many individuals will be served?
 - What does the County hope to learn?
 - ◆ Do the learning objectives have outcomes that can be measured?
- Section 3 – Additional Regulatory Requirements
 - CPP; Stakeholder involvement; Cultural Competence
 - Evaluation
 - Sustainability



Project Plan : Recommended Template (cont'd)

- Section 4 – Budget / Expenditure Sources
 - Budget narrative
 - Budget by Fiscal Year and budget category
 - Leveraging of funds
 - ◆ Federal Financial Participation
 - ◆ Other MHSA funding sources
 - ◆ 1991 Realignment
 - Sustainability of proposed project



Innovations: Things to consider

- An innovative project may affect any aspect of mental health practices or evaluate a new or changed application to solving mental health challenges. Examples may include:
 - Administrative, governance, processes and procedures
 - Education and training for service providers
 - Advocacy
 - Services and interventions
 - Research
- There is no such thing as a FAILED project
 - There is learning in what doesn't work
 - Allows counties to take a risk by testing or trying new ideas



Commission Meeting Recommendations

■ Presenters

- Recommend between 2-4 presenters per project
- County encouraged to bring support for public comment
- Brief biography of presenters to include name, title, and area of expertise in relation to the project

■ Presentation

- Presentation should be between 10-15 minutes
- Recommend 5 slides to include the following:
 - ◆ Presenting Problem / Need
 - ◆ Proposed project to address the need
 - ◆ What is innovative about the project? How will the project be evaluated?
 - ◆ Budget
 - ◆ Sustainability

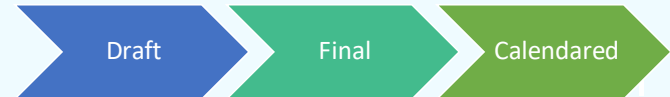


Innovation Dashboard: Quick Snapshot

INNOVATION DASHBOARD

April 2019

	Number of Plans	Counties	Dollars Requested	Average Time from FINAL to COMMISSION CALENDAR
Calendared*	5	5	\$19,758,250	52 days+
Draft Proposals Received	6	5	\$8,245,996	
TOTAL	11	10	\$28,004,246	



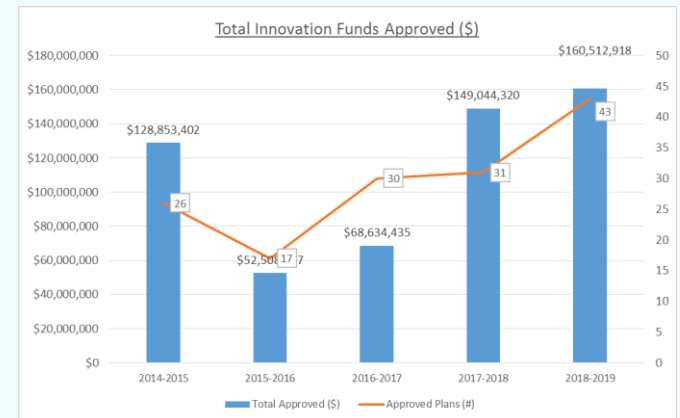
* **APRIL:** Butte (1), Alameda (1)

MAY: Ventura (1), Los Angeles (1), Orange (1)

† This excludes extensions of previously-approved projects, Tech Suite additions, and government

Previous Trends

	Fiscal Year				
	14/15	15/16	16/17	17/18	18/19 (to date)
APPROVED INN Dollars	\$127,742,348	\$46,920,919	\$66,625,827	\$143,871,714	\$155,480,729
APPROVED Ext. Dollars	\$1,111,054	\$5,587,378	\$2,008,608	\$5,172,606	\$5,032,189
Plans Received	N/A	N/A	33	34	43
Plans that Received Commission Vote	N/A	N/A	33	34	43
Plans APPROVED	26	17	30	31	43
Participating Counties	16	15	18	19	28
	27%	25%	31%	32%	47%



Number of Counties that have presented an INN Plan since 2013:

55 Counties

93%

Number of Counties that have NOT presented an INN Plan since 2013:

4 Counties

7%



Innovation Incubator

- History
- Goals
- Roles
- Multi-County Opportunities for Collaborative Innovation Projects
 - March 20, 2019- MEMO
 - ◆ Statewide Early Psychosis Learning Collaborative
 - ◆ Allcove: One Stop Shop for Integrated Youth Mental Health Support
 - ◆ Incompetent to Stand Trial Population-Criminal Justice
 - ◆ Full Service Partnership (FSP) Innovation Project
 - ◆ Youth Innovation Project
 - ◆ Schools and Mental Health



Q & A

Contact Information:

Dr. Sharmil Shah

sharmil.shah@mhsoac.ca.gov

Grace Reedy

grace.reedy@mhsoac.ca.gov

