



A Department of Ventura County Health Care Agency

Prevalence Estimates of Latinos with SED and SMI below the 200% poverty rate in California

by
Henry E. Villanueva, Ed.D.

Final 1115 Waiver Behavioral Health Needs Assessment (February 2012):
Human Services Research Institute, Technical Assistance Collaborative and
Expert Consultation From Charles Holzer in collaboration with the CA
Department of Health Care Services



Today's Purpose

- Review population trends in California
- Examine Latino disparities Statewide
- Examine Latino disparities for select counties
- Discuss the implications of these disparities
- How to use this information
- Next Steps



The importance of this report and data

- Provides the opportunity to identify gaps as well as strengths.
- Begins the development of a Mental Health System Plan
- Reviews needs and service utilization for Medicaid recipients (Medi-Cal)
- Conducts a needs assessment for Latinos (the fastest growing population)
- Serves as a barometer and planning tool for counties

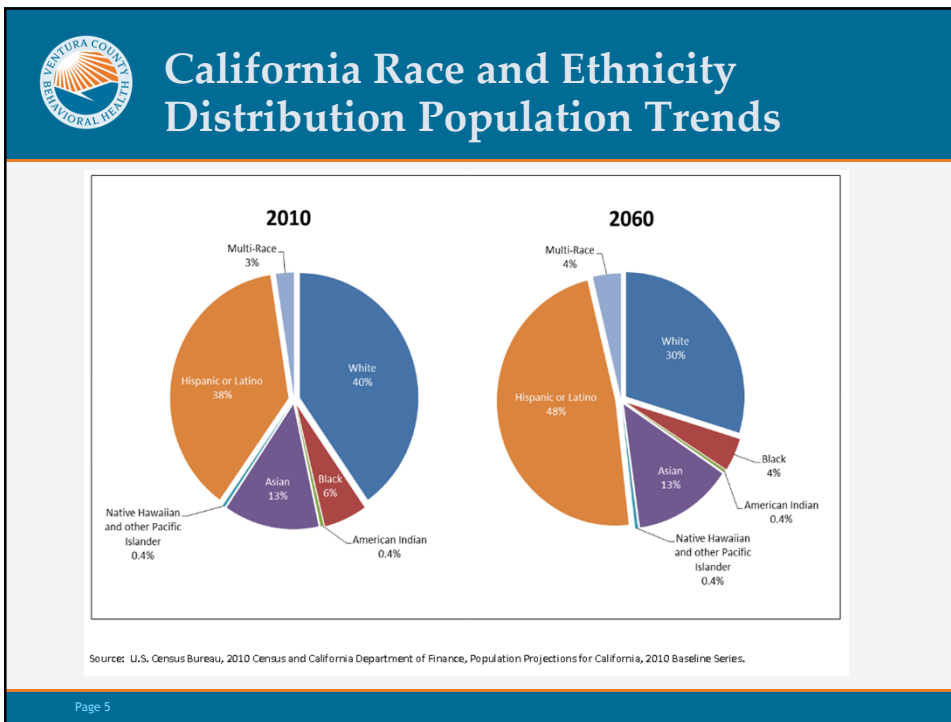
Page 3



Prevalence and Penetration Defined

- **Prevalence Rates** represent the estimates of people in California with Serious Mental Illness(SMI) or Serious Emotional Disturbance (SED).
- **Penetration rates** tell us how many people are being served compared to how many people are eligible for services. These rates are calculated by dividing the number of people who actually receive public mental health services during a year by the monthly average of Medi-Cal eligible.
- All of the information combined provides us with some indication of how the public mental health system fares in regards to meeting the needs of individuals across various demographic characteristics.

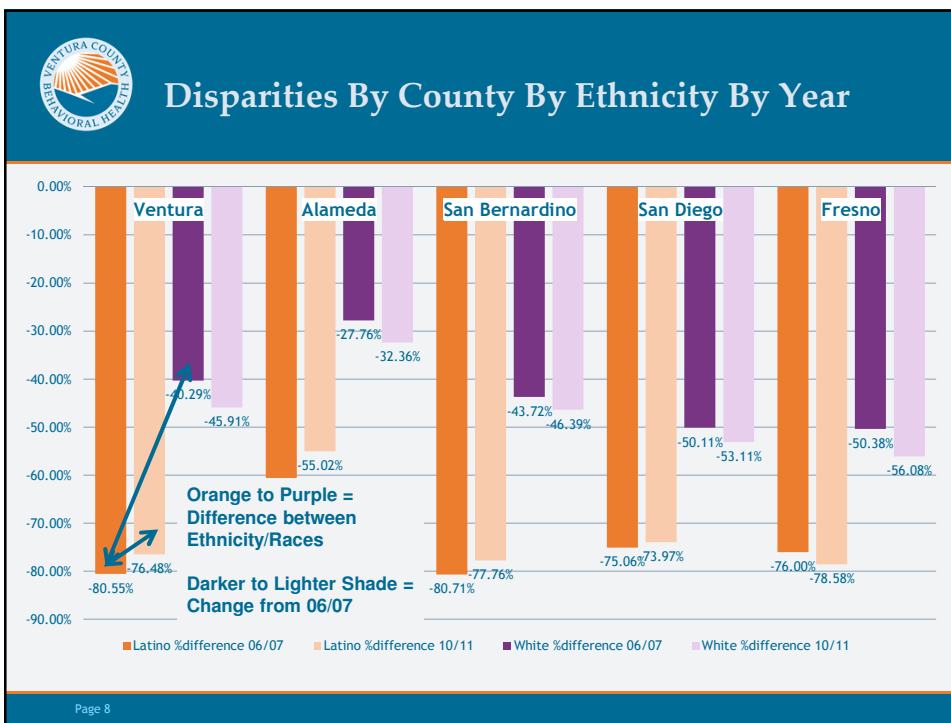
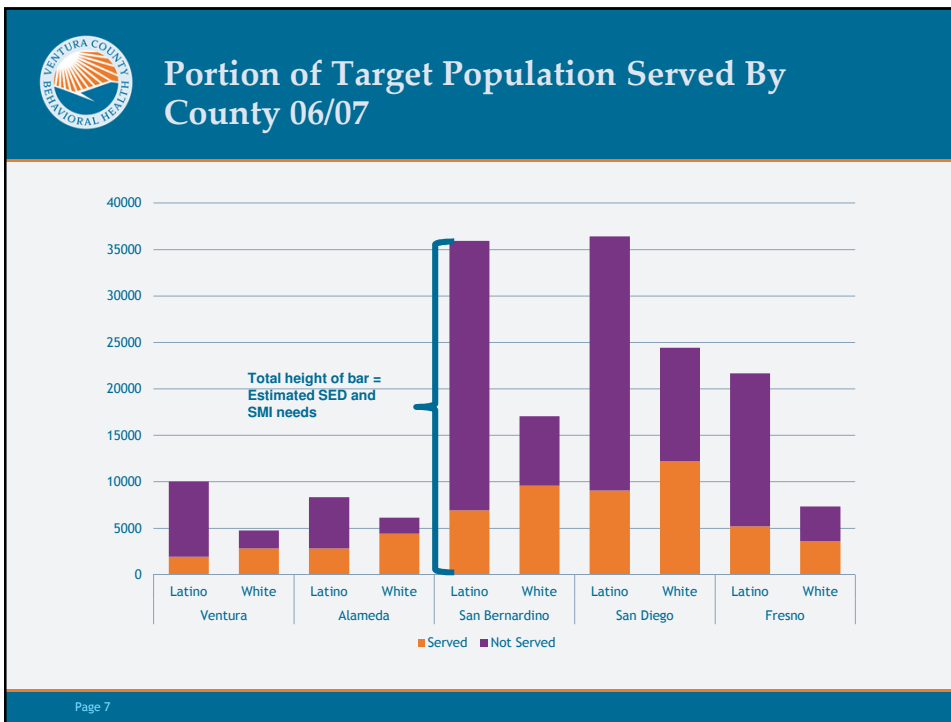
Page 4

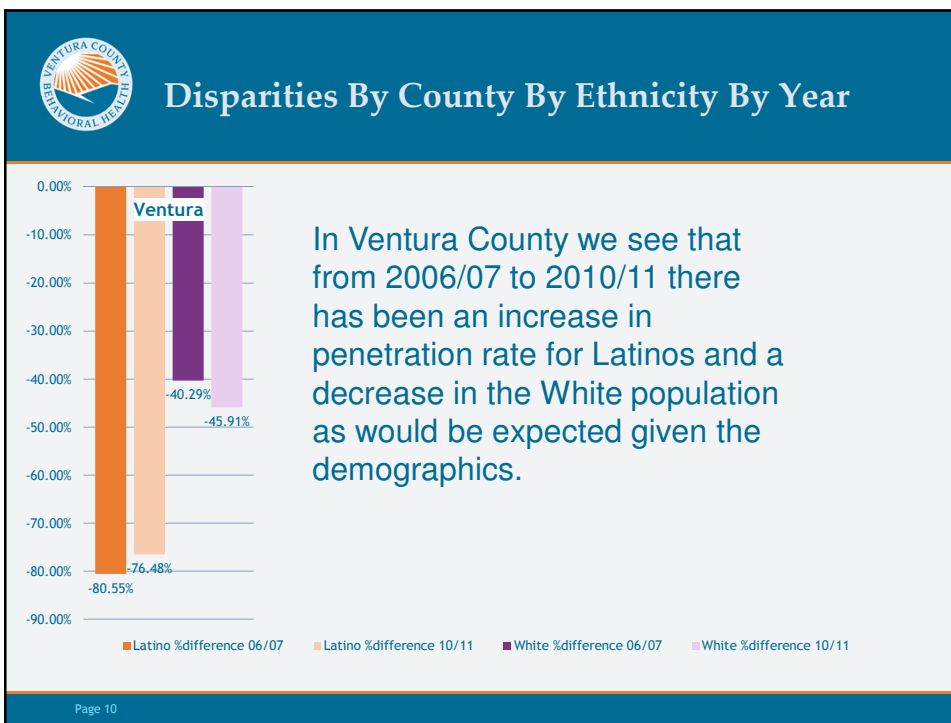
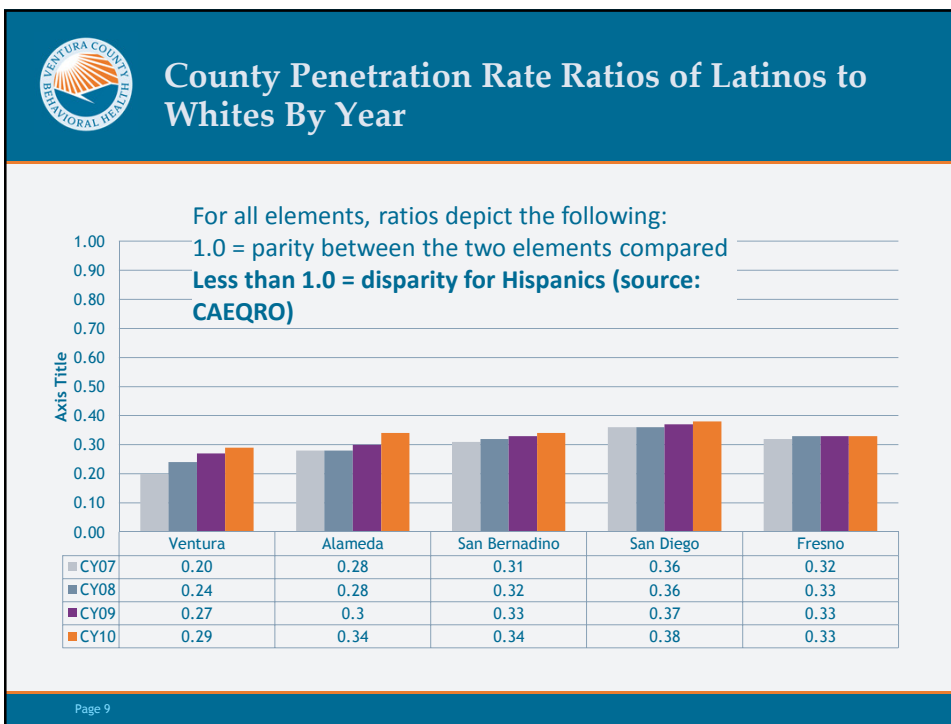


Year	Hispanic			White		
	Served ₁	Holzer Target ₂	% Difference	Served ₁	Holzer Target ₂	% Difference
10/11	142,652	552,804	-74.19%	151,185	259,266	-41.69%
06/07	120,591	537,168	-77.55%	164,717	265,250	-37.90%

1. CAEORO: <http://www.caeoro.com/webx/ee81207/>
 And <http://caeoro.com/webx/Reports%20and%20Presentations/FY2011-12%20EQRO%20MHP%20Reports/>

2. Holzer Prevalence 2007: http://www.dmh.ca.gov/Statistics_and_Data_Analysis/Total_Population_by_County.asp
 For 2010: <http://www.dhcs.ca.gov/provgovpart/Pages/BehavioralHealthServicesAssessmentPlan.aspx>







Ventura Disparity Comparisons 2006/07 to 2010/11

Year	Hispanic			White		
	Served ₁	Holzer Target ₂	% Difference	Served ₁	Holzer Target ₂	% Difference
10/11	2,451	10,422	-76.48%	2,485	4,594	-45.91%
06/07	1,949	10,022	-80.55%	2,839	4,755	-40.29%

1. CAEQRO: <http://www.caeqro.com/webx/ee81207/>
And <http://caeqro.com/webx/Reports%20and%20Presentations/FY2011-12%20EQRO%20MHP%20Reports/>

2. Holzer Prevalence 2007: http://www.dmh.ca.gov/Statistics_and_Data_Analysis/Total_Population_by_County.asp
For 2010: <http://www.dhcs.ca.gov/provgovpart/Pages/BehavioralHealthServicesAssessmentPlan.aspx>



Other CA Counties Disparity Comparisons 2006/07 to 2010/11

Year	County	Hispanic			White		
		Served	Holzer Target	% Difference	Served	Holzer Target	% Difference
10/11	Alameda	3,928	8,733	-55.02%	4,153	6,140	-32.36%
06/07	Alameda	2,835	8,344	-66.02%	4,427	6,128	-27.76%
10/11	San Bernardino	8,188	36,817	-77.76%	8,667	16,167	-46.39%
06/07	San Bernardino	6,933	35,945	-80.71%	9,594	17,048	-43.72%
10/11	San Diego	9,974	38,314	-73.97%	11,459	24,440	-53.11%
06/07	San Diego	9,080	36,401	-75.06%	12,190	24,433	-50.11%
10/11	Fresno	4,827	22,539	-78.58%	3,130	7,127	-56.08%
06/07	Fresno	5,205	21,690	-76.00%	3,644	7,344	-50.38%



Moving to Action in California

- Decreasing disparities in CA by 10% would mean serving 55,280 additional clients and decreasing by 20% would equal serving and additional 110,560 clients
- Strategically target communities
- Creating services in the targeted community
- Work with community based organization to serve as facilitators

Page 13



Initiatives in Ventura County

- Moved and expanded facilities in the Santa Paula
- Opened a Youth and Family Clinic in Fillmore
- Implemented Outreach and Engagement Programs targeting Latinos in Santa Paula, Fillmore and Piru
- Conducted a Latino Access Study
- Adjusted the Spanish readability of the Ventura County Outcomes System to reflect the local community
- Conducted an EQRO PIP in Santa Paula examining access for Latinos

Page 14



Initiatives in Ventura County (cont'd)

- Plans are in place to move the Oxnard Clinics (Adult and Youth & Family) to Center Point Mall located in a high density Latino area
- Currently conducting an EQRO PIP looking at satisfaction of Interpreter use
- Beginning to use Promotoras in an outreach and education effort in the Santa Clara Valley

Page 15



Implications and Next Steps

- Use the Behavioral Health Needs Assessment (2012) as a tool to better understand changing demographics
- Find venues to heighten county awareness of the need to further reduce disparities for Latinos
- Create pathways to engage and educate Latinos
- Create pathways for reducing disparities for Latinos who meet the SMI/SED criteria
- Identify successful practices that are specific to Latinos and develop them to Promising Practices then Evidenced Based Practices
- Commit to increasing the penetration rate with specific targets

Page 16



Discussion and Questions

Accessing the report

<http://www.dhcs.ca.gov/provgovpart/Pages/BehavioralHealthServicesAssessmentPlan.aspx>

The screenshot shows the California Department of Health Care Services website. The page title is "1115 Waiver Behavioral Health Services Needs and Service Plan Assessment Archive". The main content area contains a paragraph explaining that the Department of Health Care Services (DHCS) released the Final 1115 Waiver Behavioral Health Services Needs Assessment (Needs Assessment). It mentions that the Needs Assessment has identified a number of needs and gaps in the California mental health and substance use services system, as well as many strengths and building blocks for improvements. It also states that DHCS seeks feedback on developing the Service System Plan that is required to be submitted to the Centers for Medicare and Medicaid Services by October 1, 2013, pursuant to the Special Terms and Conditions (STC) of the 1115 "Bridge to Balance" waiver. The page includes a list of "Needs Assessment Documents" such as the Final Needs Assessment, Data Appendix, California Prevalence Estimates, Summary Document of Major Themes from Stakeholder Review and Comment, November 3, 2011 Stakeholder Advisory Committee Presentation by Technical Assistance Collaborative, Inc., in partnership with the Human Services Research Institute, and Stakeholder Interview List - Interviews are on-going; updated as of 12/02/11.