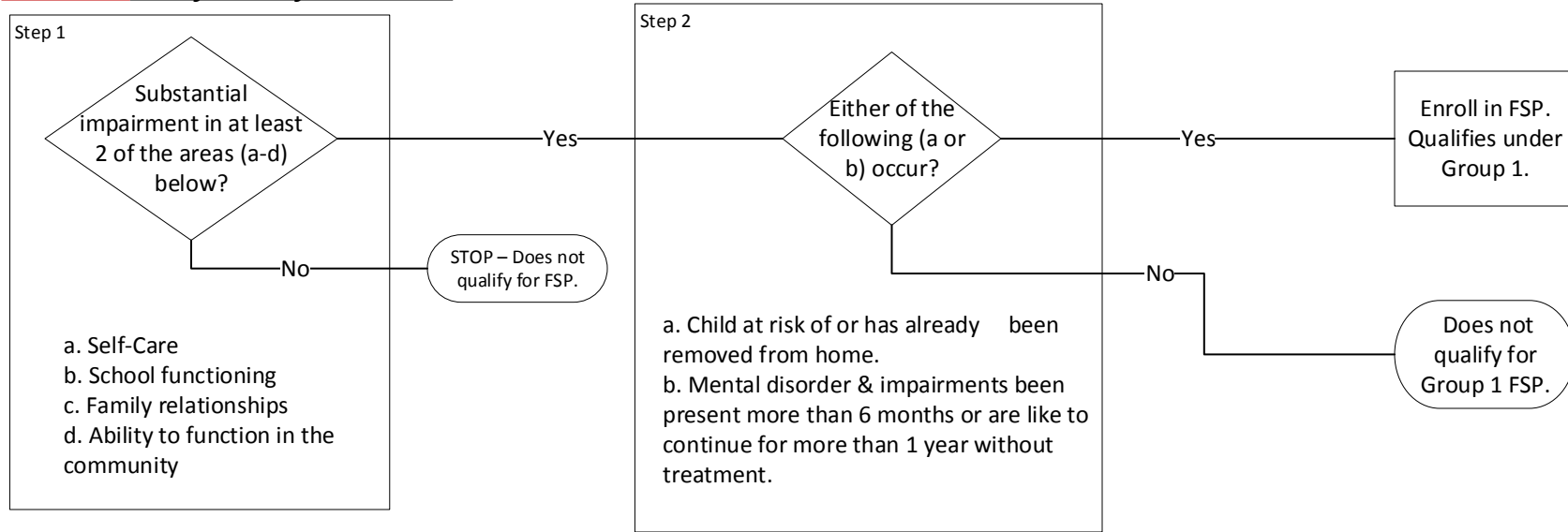
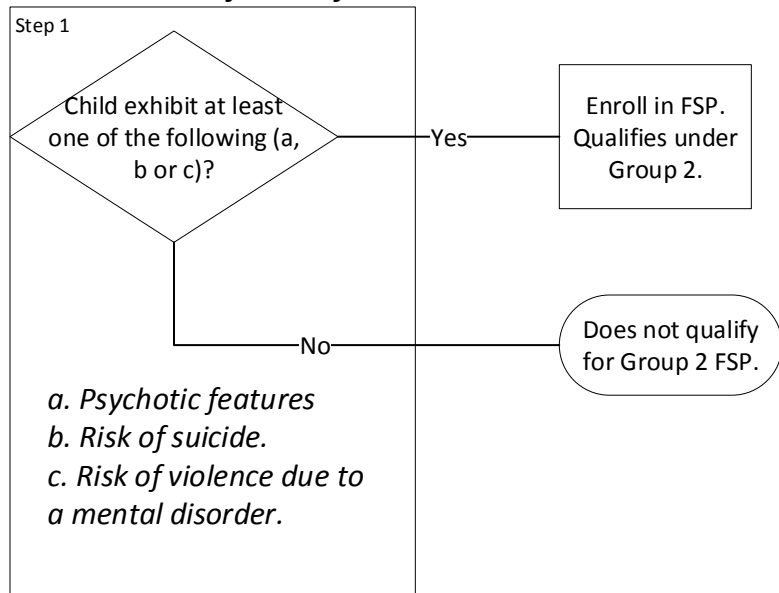


Children & adolescents (≤15 years old) identified as Seriously Emotionally Disturbed (SED) may qualify for Full Service Partnership Program (FSP) under either of the 3 Groups below.

GROUP 1: Qualification for Child FSP



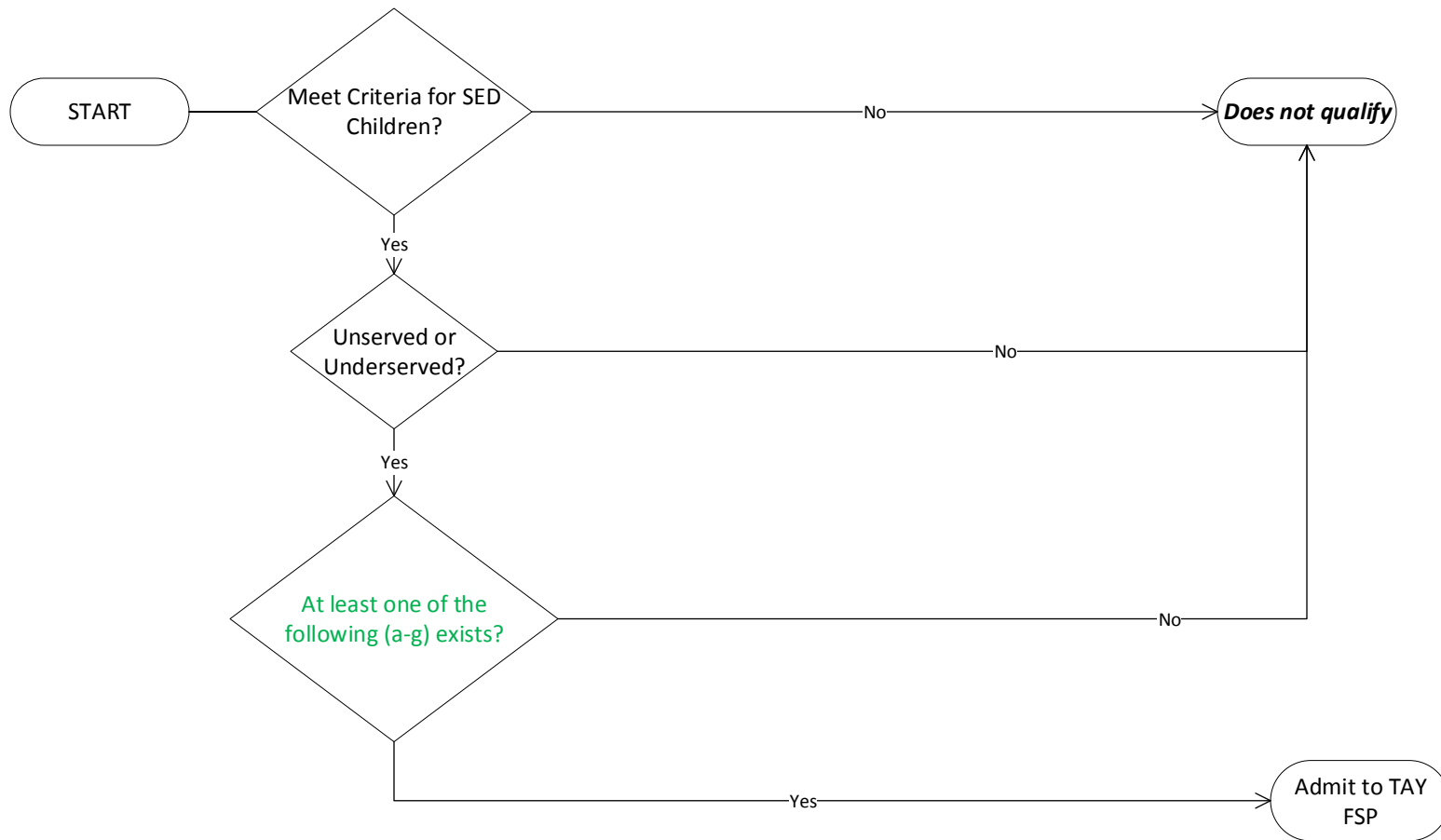
GROUP 2: Qualification for Child FSP



GROUP 3: Qualification for Child FSP

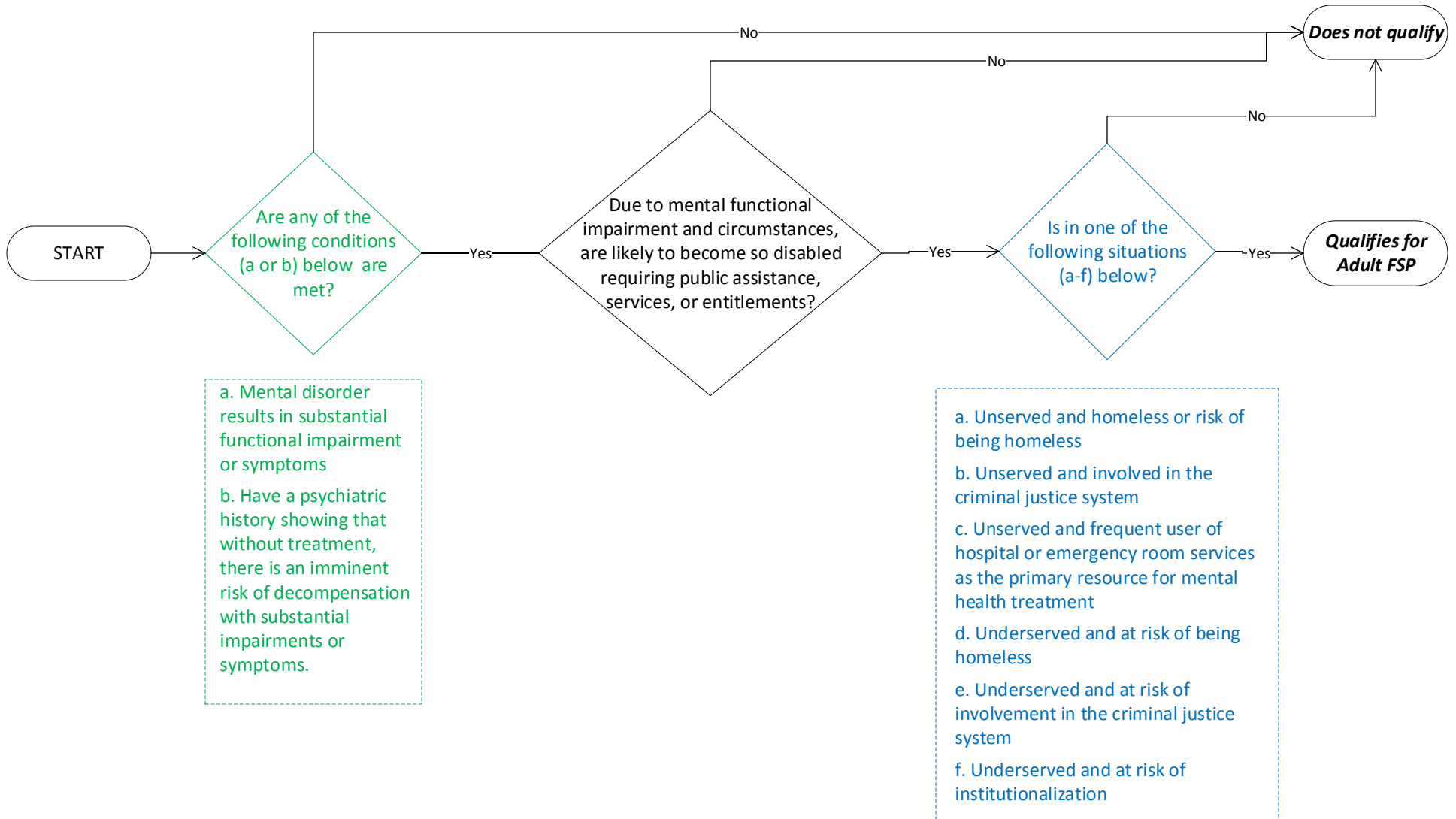
Child meets special education eligibility requirements under Chapter 26.5 of the Government Code.

SED Transition-Age Youth (youth 16 to 25 years old) qualification criteria for Full Service Partnership (FSP) Program:

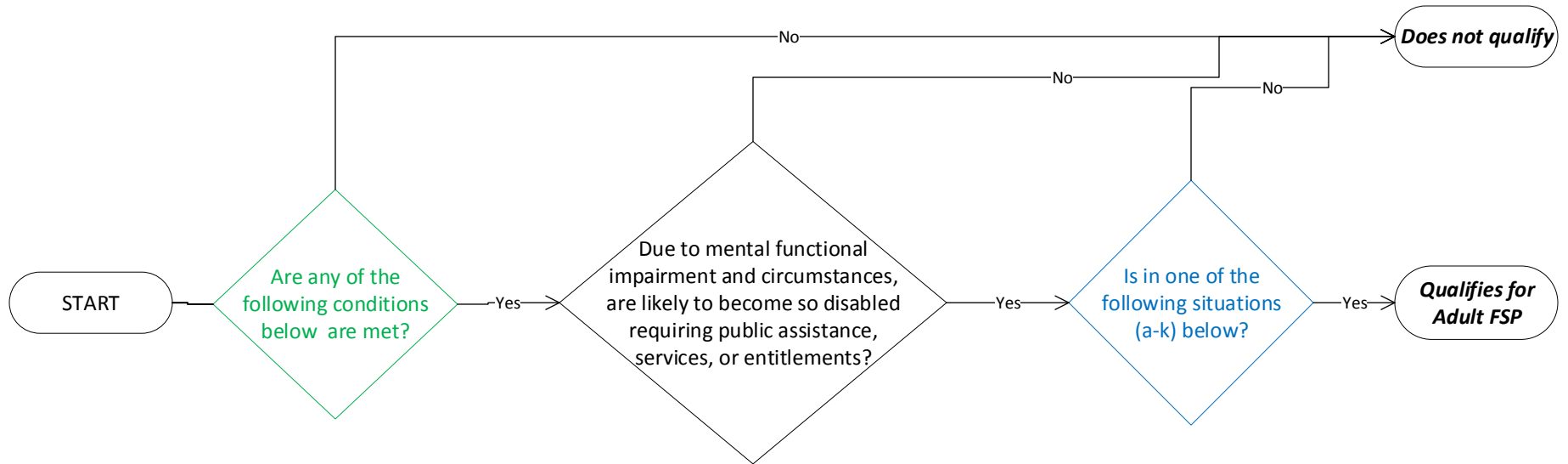


- a. Homeless or risk of being homeless
- b. Aging out of the child and youth mental health system
- c. Aging out of the child welfare system
- d. Aging out of the juvenile justice system
- e. Involved in the criminal justice system
- f. At risk of involuntary hospitalization or institutionalization
- g. Have experienced a first episode of serious mental illness

SMI Adults (26 to 59 years old) qualification requirements for Full Service Partnership Program:



SMI Older Adults (60 years old and older) Full Service Partnership Program entrance criteria:



- A. Mental disorder results in substantial functional impairment or symptoms
- B. Have a psychiatric history showing that without treatment, there is an imminent risk of decompensation with substantial impairments or symptoms.

- a. Unserved and experiencing a reduction in personal and/or community functioning
- b. Unserved and homeless
- c. Unserved and at risk of being homeless
- d. Unserved and at risk of being institutionalized
- e. Unserved and at risk of "out-of-home" care
- f. Unserved and at risk of becoming frequent users of hospital and/or emergency room services as the primary resource for mental health treatment
- g. Underserved and at risk of being homeless
- h. Underserved and at risk of being institutionalized
- i. Underserved and at risk of nursing home or "out-of-home" care
- j. Underserved and at risk of frequently using hospital and/or emergency room services as primary resource for mental health treatment
- k. Underserved and at risk of involvement in the criminal justice system